

Datasheet for ABIN651508  
**anti-MYLIP antibody (AA 111-139)**[Go to Product page](#)

## 6 Images

## Overview

Quantity:	400 µL
Target:	MYLIP
Binding Specificity:	AA 111-139
Reactivity:	Human, Mouse, Rat
Host:	Rabbit
Clonality:	Polyclonal
Conjugate:	This MYLIP antibody is un-conjugated
Application:	Western Blotting (WB), Flow Cytometry (FACS), Immunohistochemistry (Paraffin-embedded Sections) (IHC (p))

## Product Details

Immunogen:	This MYLIP antibody is generated from rabbits immunized with a KLH conjugated synthetic peptide between 111-139 amino acids from the Central region of human MYLIP.
Clone:	RB18661
Isotype:	Ig Fraction
Purification:	This antibody is purified through a protein A column, followed by peptide affinity purification.

## Target Details

Target:	MYLIP
Alternative Name:	MYLIP ( <a href="#">MYLIP Products</a> )

## Target Details

**Background:** The ERM protein family members ezrin, radixin, and moesin are cytoskeletal effector proteins linking actin to membrane-bound proteins at the cell surface. Myosin regulatory light chain interacting protein (MYLIP) is a novel ERM-like protein that interacts with myosin regulatory light chain and inhibits neurite outgrowth.

**Molecular Weight:** 49910

**Gene ID:** 29116

**NCBI Accession:** [NP\\_037394](#)

**UniProt:** [Q8WY64](#)

## Application Details

**Application Notes:** WB: 1:1000. WB: 1:2000. WB: 1:2000. WB: 1:1000. IHC-P: 1:50~100. FC: 1:10~50

**Restrictions:** For Research Use only

## Handling

**Format:** Liquid

**Buffer:** Purified polyclonal antibody supplied in PBS with 0.09 % (W/V) sodium azide.

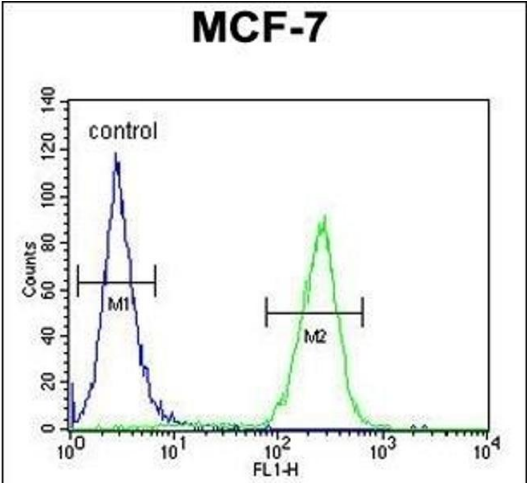
**Preservative:** Sodium azide

**Precaution of Use:** This product contains Sodium azide: a POISONOUS AND HAZARDOUS SUBSTANCE which should be handled by trained staff only.

**Storage:** 4 °C, -20 °C

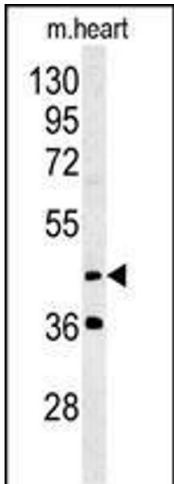
**Storage Comment:** Maintain refrigerated at 2-8 °C for up to 6 months. For long term storage store at -20 °C in small aliquots to prevent freeze-thaw cycles.

**Expiry Date:** 6 months



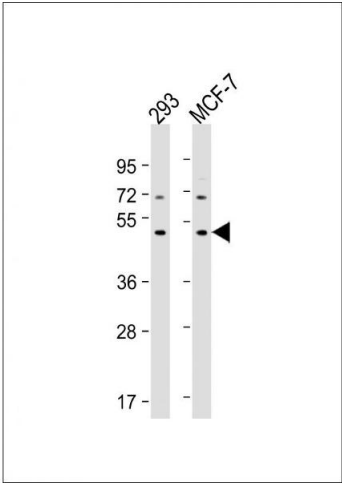
### Flow Cytometry

**Image 1.** MYLIP Antibody (Center) (ABIN651508 and ABIN2840270) flow cytometric analysis of MCF-7 cells (right histogram) compared to a negative control cell (left histogram). FITC-conjugated goat-anti-rabbit secondary antibodies were used for the analysis.



### Western Blotting

**Image 2.** MYLIP Antibody (Center) (ABIN651508 and ABIN2840270) western blot analysis in mouse heart tissue lysates (35 µg/lane). This demonstrates the MYLIP antibody detected the MYLIP protein (arrow).



### Western Blotting

**Image 3.** All lanes : Anti-MYLIP Antibody (Center) at 1:2000 dilution Lane 1: 293 whole cell lysate Lane 2: MCF-7 whole cell lysate Lysates/proteins at 20 µg per lane. Secondary Goat Anti-Rabbit IgG, (H+L), Peroxidase conjugated at 1/10000 dilution. Predicted band size : 50 kDa Blocking/Dilution buffer: 5 % NFDM/TBST.

Please check the [product details page](#) for more images. Overall 6 images are available for ABIN651508.