

Datasheet for ABIN651514
anti-NIPAL3 antibody (N-Term)



[Go to Product page](#)

2 Images

Overview

Quantity:	400 µL
Target:	NIPAL3
Binding Specificity:	AA 45-74, N-Term
Reactivity:	Human, Mouse
Host:	Rabbit
Clonality:	Polyclonal
Conjugate:	This NIPAL3 antibody is un-conjugated
Application:	Western Blotting (WB), Immunohistochemistry (Paraffin-embedded Sections) (IHC (p))

Product Details

Immunogen:	This NPAL3 antibody is generated from rabbits immunized with a KLH conjugated synthetic peptide between 45-74 amino acids from the N-terminal region of human NPAL3.
Clone:	RB26463
Isotype:	Ig Fraction
Purification:	This antibody is purified through a protein A column, followed by peptide affinity purification.

Target Details

Target:	NIPAL3
Alternative Name:	NPAL3 (NIPAL3 Products)
Molecular Weight:	44742

Target Details

Gene ID: 57185

NCBI Accession: [NP_065181](#)

UniProt: [Q6P499](#)

Application Details

Application Notes: WB: 1:1000. IHC-P: 1:50~100

Restrictions: For Research Use only

Handling

Format: Liquid

Buffer: Purified polyclonal antibody supplied in PBS with 0.09 % (W/V) sodium azide.

Preservative: Sodium azide

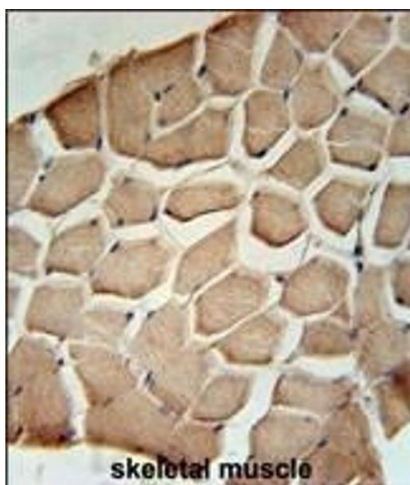
Precaution of Use: This product contains Sodium azide: a POISONOUS AND HAZARDOUS SUBSTANCE which should be handled by trained staff only.

Storage: 4 °C,-20 °C

Storage Comment: Maintain refrigerated at 2-8 °C for up to 6 months. For long term storage store at -20 °C in small aliquots to prevent freeze-thaw cycles.

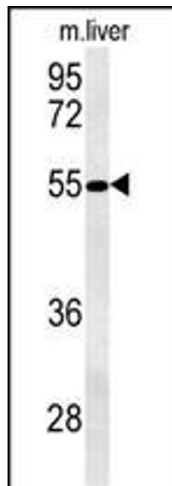
Expiry Date: 6 months

Images



Immunohistochemistry (Paraffin-embedded Sections)

Image 1. NL3 Antibody (N-term) (ABIN651514 and ABIN2840273) immunohistochemistry analysis in formalin fixed and raffin embedded human skeletal muscle followed by peroxidase conjugation of the secondary antibody and DAB staining. This data demonstrates the use of the NL3 Antibody (N-term) for immunohistochemistry. Clinical relevance has not been evaluated.



Western Blotting

Image 2. NL3 Antibody (N-term) (ABIN651514 and ABIN2840273) western blot analysis in mouse liver tissue lysates (35 µg/lane). This demonstrates the NL3 antibody detected NL3 protein (arrow).