

Datasheet for ABIN651520

anti-Actin-Like 6B antibody (N-Term)**3** Images[Go to Product page](#)

Overview

Quantity:	400 µL
Target:	Actin-Like 6B (ACTL6B)
Binding Specificity:	AA 42-70, N-Term
Reactivity:	Human
Host:	Rabbit
Clonality:	Polyclonal
Conjugate:	This Actin-Like 6B antibody is un-conjugated
Application:	Western Blotting (WB), Flow Cytometry (FACS), Immunohistochemistry (Paraffin-embedded Sections) (IHC (p))

Product Details

Immunogen:	This ACTL6B antibody is generated from rabbits immunized with a KLH conjugated synthetic peptide between 42-70 amino acids from the N-terminal region of human ACTL6B.
Clone:	RB26766
Isotype:	Ig Fraction
Purification:	This antibody is purified through a protein A column, followed by peptide affinity purification.

Target Details

Target:	Actin-Like 6B (ACTL6B)
Alternative Name:	ACTL6B (ACTL6B Products)

Target Details

Background: ACTL6B is a member of a family of actin-related proteins (ARPs) which share significant amino acid sequence identity to conventional actins. Both actins and ARPs have an actin fold, which is an ATP-binding cleft, as a common feature. The ARPs are involved in diverse cellular processes, including vesicular transport, spindle orientation, nuclear migration and chromatin remodeling. This gene encodes a subunit of the BAF (BRG1/brm-associated factor) complex in mammals, which is functionally related to SWI/SNF complex in *S. cerevisiae* and *Drosophila*, the latter is thought to facilitate transcriptional activation of specific genes by antagonizing chromatin-mediated transcriptional repression. This subunit may be involved in the regulation of genes by structural modulation of their chromatin, specifically in the brain.

Molecular Weight: 46877

Gene ID: 51412

NCBI Accession: [NP_057272](#)

UniProt: [O94805](#)

Application Details

Application Notes: WB: 1:1000. IHC-P: 1:50~100. FC: 1:10~50

Restrictions: For Research Use only

Handling

Format: Liquid

Buffer: Purified polyclonal antibody supplied in PBS with 0.09 % (W/V) sodium azide.

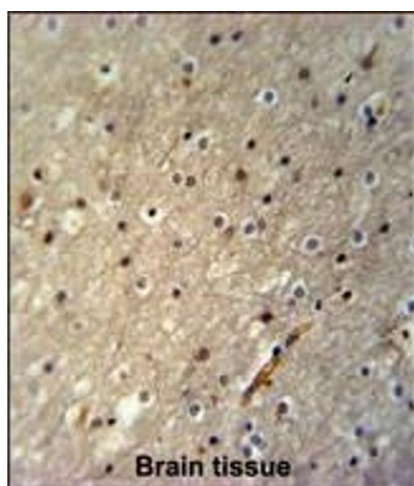
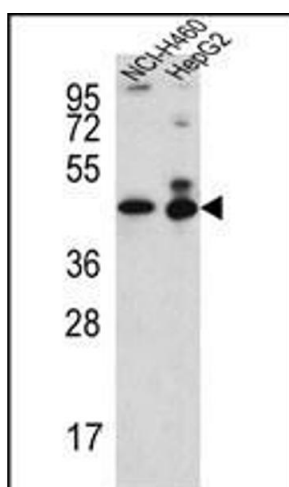
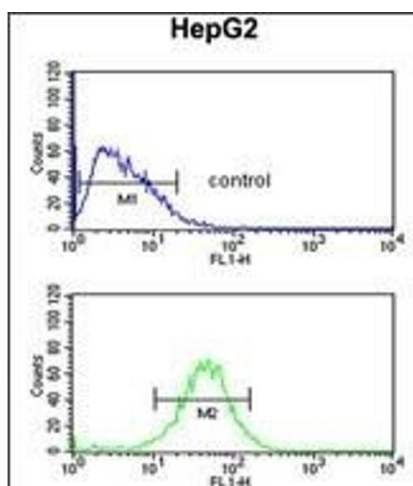
Preservative: Sodium azide

Precaution of Use: This product contains Sodium azide: a POISONOUS AND HAZARDOUS SUBSTANCE which should be handled by trained staff only.

Storage: 4 °C, -20 °C

Storage Comment: Maintain refrigerated at 2-8 °C for up to 6 months. For long term storage store at -20 °C in small aliquots to prevent freeze-thaw cycles.

Expiry Date: 6 months



Flow Cytometry

Image 1. ACTL6B Antibody (N-term) (ABIN651520 and ABIN2840276) flow cytometric analysis of HepG2 cells (bottom histogram) compared to a negative control cell (top histogram). FITC-conjugated goat-anti-rabbit secondary antibodies were used for the analysis.

Western Blotting

Image 2. ACTL6B Antibody (N-term) (ABIN651520 and ABIN2840276) western blot analysis in NCI-, HepG2 cell line lysates (35 µg/lane). This demonstrates the ACTL6B antibody detected the ACTL6B protein (arrow).

Immunohistochemistry (Paraffin-embedded Sections)

Image 3. ACTL6B Antibody (N-term) (ABIN651520 and ABIN2840276) immunohistochemistry analysis in formalin fixed and paraffin embedded human brain tissue followed by peroxidase conjugation of the secondary antibody and DAB staining. This data demonstrates the use of the ACTL6B Antibody (N-term) for immunohistochemistry. Clinical relevance has not been evaluated.