



[Go to Product page](#)

Datasheet for ABIN651523
anti-SH2D2A antibody (AA 86-112)

1 Image

Overview

Quantity:	400 µL
Target:	SH2D2A
Binding Specificity:	AA 86-112
Reactivity:	Human
Host:	Rabbit
Clonality:	Polyclonal
Conjugate:	This SH2D2A antibody is un-conjugated
Application:	Western Blotting (WB)

Product Details

Immunogen:	This SH2D2A antibody is generated from rabbits immunized with a KLH conjugated synthetic peptide between 86-112 amino acids from the Central region of human SH2D2A.
Clone:	RB26789
Isotype:	Ig Fraction
Purification:	This antibody is purified through a protein A column, followed by peptide affinity purification.

Target Details

Target:	SH2D2A
Alternative Name:	SH2D2A (SH2D2A Products)
Background:	This protein encodes an adaptor protein thought to function in T-cell signal transduction. A

Target Details

related protein in mouse is responsible for the activation of lymphocyte-specific protein-tyrosine kinase and functions in downstream signaling. Alternative splicing results in multiple transcript variants.

Molecular Weight: 42934

Gene ID: 9047

NCBI Accession: [NP_001154914](#), [NP_001154916](#), [NP_003966](#)

UniProt: [Q9NP31](#)

Pathways: [Signaling Events mediated by VEGFR1 and VEGFR2](#), [VEGF Signaling](#)

Application Details

Application Notes: WB: 1:1000

Restrictions: For Research Use only

Handling

Format: Liquid

Buffer: Purified polyclonal antibody supplied in PBS with 0.09 % (W/V) sodium azide.

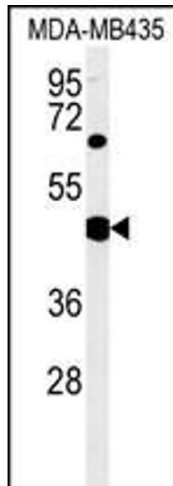
Preservative: Sodium azide

Precaution of Use: This product contains Sodium azide: a POISONOUS AND HAZARDOUS SUBSTANCE which should be handled by trained staff only.

Storage: 4 °C,-20 °C

Storage Comment: Maintain refrigerated at 2-8 °C for up to 6 months. For long term storage store at -20 °C in small aliquots to prevent freeze-thaw cycles.

Expiry Date: 6 months



Western Blotting

Image 1. SH2D2A Antibody (Center) (ABIN651523 and ABIN2840277) western blot analysis in MDA-M cell line lysates (35 µg/lane). This demonstrates the SH2D2A antibody detected the SH2D2A protein (arrow).