

Datasheet for ABIN651528  
**anti-NPM3 antibody (N-Term)**[Go to Product page](#)

## 2 Images

## Overview

Quantity:	400 µL
Target:	NPM3
Binding Specificity:	AA 30-58, N-Term
Reactivity:	Human, Mouse
Host:	Rabbit
Clonality:	Polyclonal
Conjugate:	This NPM3 antibody is un-conjugated
Application:	Western Blotting (WB), Flow Cytometry (FACS)

## Product Details

Immunogen:	This NPM3 antibody is generated from rabbits immunized with a KLH conjugated synthetic peptide between 30-58 amino acids from the N-terminal region of human NPM3.
Clone:	RB26821
Isotype:	Ig Fraction
Purification:	This antibody is purified through a protein A column, followed by peptide affinity purification.

## Target Details

Target:	NPM3
Alternative Name:	NPM3 ( <a href="#">NPM3 Products</a> )
Background:	NPM3 is related to the nuclear chaperone phosphoproteins, nucleoplasmin and

## Target Details

nucleophosmin. This protein is strongly expressed in diverse cell types where it localizes primarily to the nucleus. Based on its similarity to nucleoplasmin and nucleophosmin, this protein likely functions as a molecular chaperone in the cell nucleus.

Molecular Weight: 19344

Gene ID: 10360

NCBI Accession: [NP\\_008924](#)

UniProt: [O75607](#)

## Application Details

Application Notes: WB: 1:1000. FC: 1:10~50

Restrictions: For Research Use only

## Handling

Format: Liquid

Buffer: Purified polyclonal antibody supplied in PBS with 0.09 % (W/V) sodium azide.

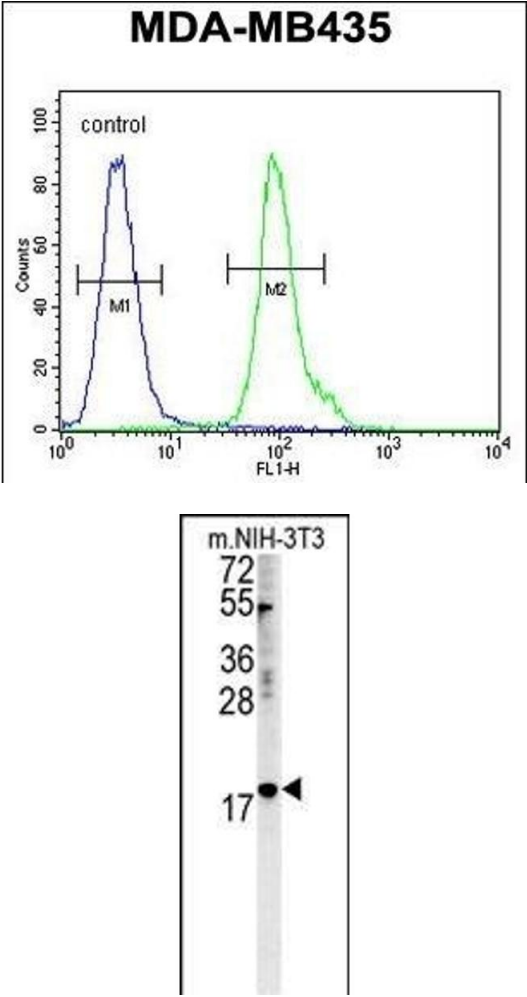
Preservative: Sodium azide

Precaution of Use: This product contains Sodium azide: a POISONOUS AND HAZARDOUS SUBSTANCE which should be handled by trained staff only.

Storage: 4 °C, -20 °C

Storage Comment: Maintain refrigerated at 2-8 °C for up to 6 months. For long term storage store at -20 °C in small aliquots to prevent freeze-thaw cycles.

Expiry Date: 6 months



### Flow Cytometry

**Image 1.** N Antibody (N-term) (ABIN651528 and ABIN2840279) flow cytometric analysis of MDA-M cells (right histogram) compared to a negative control cell (left histogram). FITC-conjugated goat-anti-rabbit secondary antibodies were used for the analysis.

### Western Blotting

**Image 2.** N Antibody (N-term) (ABIN651528 and ABIN2840279) western blot analysis in mouse NIH-3T3 cell line lysates (35 µg/lane). This demonstrates the N antibody detected the N protein (arrow).