

Datasheet for ABIN651535  
**anti-EIF3G antibody (AA 209-238)**[Go to Product page](#)

## 3 Images

## Overview

Quantity:	400 µL
Target:	EIF3G
Binding Specificity:	AA 209-238
Reactivity:	Human
Host:	Rabbit
Clonality:	Polyclonal
Conjugate:	This EIF3G antibody is un-conjugated
Application:	Western Blotting (WB), Flow Cytometry (FACS), Immunohistochemistry (Paraffin-embedded Sections) (IHC (p))

## Product Details

Immunogen:	This EIF3G antibody is generated from rabbits immunized with a KLH conjugated synthetic peptide between 209-238 amino acids from the Central region of human EIF3G.
Clone:	RB26846
Isotype:	Ig Fraction
Predicted Reactivity:	X, B, Zf, M, Rat
Purification:	This antibody is purified through a protein A column, followed by peptide affinity purification.

## Target Details

Target:	EIF3G
---------	-------

## Target Details

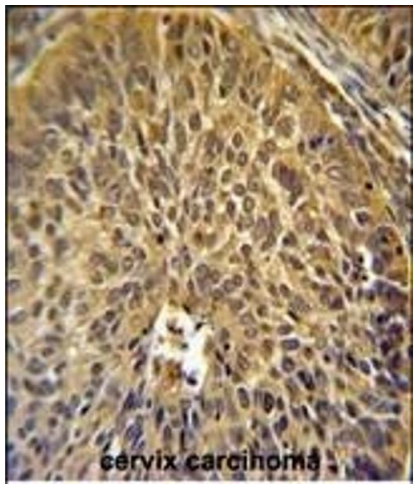
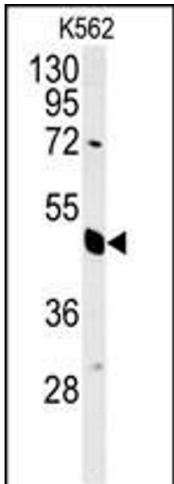
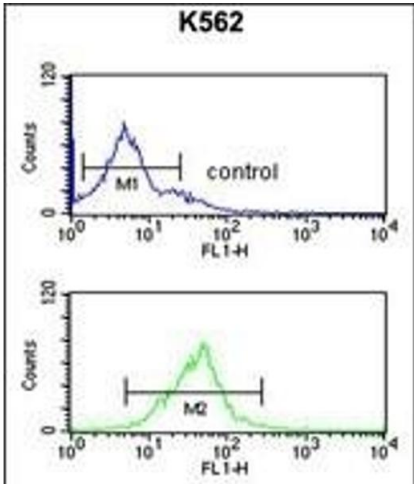
Alternative Name:	EIF3G ( <a href="#">EIF3G Products</a> )
Background:	Component of the eukaryotic translation initiation factor 3 (eIF-3) complex, which is required for several steps in the initiation of protein synthesis. The eIF-3 complex associates with the 40S ribosome and facilitates the recruitment of eIF-1, eIF-1A, eIF-2:GTP:methionyl-tRNA <sup>i</sup> and eIF-5 to form the 43S preinitiation complex (43S PIC). The eIF-3 complex stimulates mRNA recruitment to the 43S PIC and scanning of the mRNA for AUG recognition. The eIF-3 complex is also required for disassembly and recycling of posttermination ribosomal complexes and subsequently prevents premature joining of the 40S and 60S ribosomal subunits prior to initiation. This subunit can bind 18S rRNA.
Molecular Weight:	35611
Gene ID:	8666
NCBI Accession:	<a href="#">NP_003746</a>
UniProt:	<a href="#">O75821</a>
Pathways:	<a href="#">Ribonucleoprotein Complex Subunit Organization</a>

## Application Details

Application Notes:	WB: 1:1000. IHC-P: 1:50~100. FC: 1:10~50
Restrictions:	For Research Use only

## Handling

Format:	Liquid
Buffer:	Purified polyclonal antibody supplied in PBS with 0.09 % (W/V) sodium azide.
Preservative:	Sodium azide
Precaution of Use:	This product contains Sodium azide: a POISONOUS AND HAZARDOUS SUBSTANCE which should be handled by trained staff only.
Storage:	4 °C,-20 °C
Storage Comment:	Maintain refrigerated at 2-8 °C for up to 6 months. For long term storage store at -20 °C in small aliquots to prevent freeze-thaw cycles.
Expiry Date:	6 months



### Flow Cytometry

**Image 1.** EIF3G Antibody (Center) (ABIN651535 and ABIN2840284) flow cytometric analysis of K562 cells (bottom histogram) compared to a negative control cell (top histogram). FITC-conjugated goat-anti-rabbit secondary antibodies were used for the analysis.

### Western Blotting

**Image 2.** EIF3G Antibody (Center) (ABIN651535 and ABIN2840284) western blot analysis in K562 cell line lysates (35 µg/lane). This demonstrates the EIF3G antibody detected the EIF3G protein (arrow).

### Immunohistochemistry (Paraffin-embedded Sections)

**Image 3.** EIF3G Antibody (Center) (ABIN651535 and ABIN2840284) immunohistochemistry analysis in formalin fixed and paraffin embedded human cervix carcinoma followed by peroxidase conjugation of the secondary antibody and DAB staining. This data demonstrates the use of the EIF3G Antibody (Center) for immunohistochemistry. Clinical relevance has not been evaluated.