



[Go to Product page](#)

Datasheet for ABIN651542
anti-KLC3 antibody (AA 245-274)

3 Images

Overview

Quantity:	400 µL
Target:	KLC3
Binding Specificity:	AA 245-274
Reactivity:	Human, Mouse
Host:	Rabbit
Clonality:	Polyclonal
Conjugate:	This KLC3 antibody is un-conjugated
Application:	Western Blotting (WB), Flow Cytometry (FACS), Immunohistochemistry (Paraffin-embedded Sections) (IHC (p))

Product Details

Immunogen:	This KLC3 antibody is generated from rabbits immunized with a KLH conjugated synthetic peptide between 245-274 amino acids from the Central region of human KLC3.
Clone:	RB26888
Isotype:	Ig Fraction
Predicted Reactivity:	B
Purification:	This antibody is purified through a protein A column, followed by peptide affinity purification.

Target Details

Target:	KLC3
---------	------

Target Details

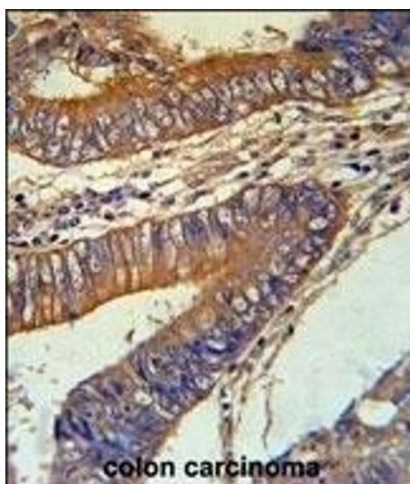
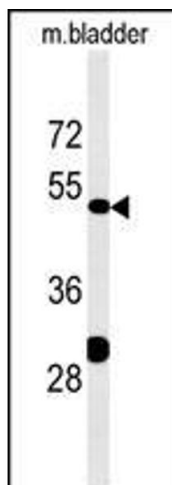
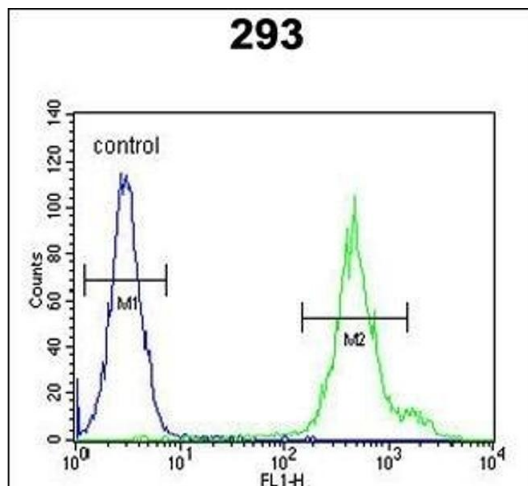
Alternative Name:	KLC3 (KLC3 Products)
Background:	KLC3 encodes a member of the kinesin light chain gene family. Kinesins are molecular motors involved in the transport of cargo along microtubules, and are composed of two kinesin heavy chain (KHC) and two kinesin light chain (KLC) molecules. KLCs are thought to typically be involved in binding cargo and regulating kinesin activity. In the rat, a protein similar to this gene product is expressed in post-meiotic spermatids, where it associates with structural components of sperm tails and mitochondria.
Molecular Weight:	55364
Gene ID:	147700
NCBI Accession:	NP_803136
UniProt:	Q6P597

Application Details

Application Notes:	WB: 1:1000. IHC-P: 1:50~100. FC: 1:10~50
Restrictions:	For Research Use only

Handling

Format:	Liquid
Buffer:	Purified polyclonal antibody supplied in PBS with 0.09 % (W/V) sodium azide.
Preservative:	Sodium azide
Precaution of Use:	This product contains Sodium azide: a POISONOUS AND HAZARDOUS SUBSTANCE which should be handled by trained staff only.
Storage:	4 °C,-20 °C
Storage Comment:	Maintain refrigerated at 2-8 °C for up to 6 months. For long term storage store at -20 °C in small aliquots to prevent freeze-thaw cycles.
Expiry Date:	6 months



Flow Cytometry

Image 1. KLC3 Antibody (Center) (ABIN651542 and ABIN2840291) flow cytometric analysis of 293 cells (right histogram) compared to a negative control cell (left histogram). FITC-conjugated goat-anti-rabbit secondary antibodies were used for the analysis.

Western Blotting

Image 2. KLC3 Antibody (Center) (ABIN651542 and ABIN2840291) western blot analysis in mouse bladder tissue lysates (35 µg/lane). This demonstrates the KLC3 antibody detected the KLC3 protein (arrow).

Immunohistochemistry (Paraffin-embedded Sections)

Image 3. KLC3 Antibody (Center) (ABIN651542 and ABIN2840291) immunohistochemistry analysis in formalin fixed and paraffin embedded human colon carcinoma followed by peroxidase conjugation of the secondary antibody and DAB staining. This data demonstrates the use of the KLC3 Antibody (Center) for immunohistochemistry. Clinical relevance has not been evaluated.