

Datasheet for ABIN651544

**anti-SFRS16 antibody (AA 254-283)**[Go to Product page](#)**2** Images

## Overview

Quantity:	400 µL
Target:	SFRS16 (CLASRP)
Binding Specificity:	AA 254-283
Reactivity:	Human
Host:	Rabbit
Clonality:	Polyclonal
Conjugate:	This SFRS16 antibody is un-conjugated
Application:	Western Blotting (WB), Flow Cytometry (FACS)

## Product Details

Immunogen:	This SFRS16 antibody is generated from rabbits immunized with a KLH conjugated synthetic peptide between 254-283 amino acids from the Central region of human SFRS16.
Clone:	RB26890
Isotype:	Ig Fraction
Predicted Reactivity:	B, M, Rat
Purification:	This antibody is purified through a protein A column, followed by peptide affinity purification.

## Target Details

Target:	SFRS16 (CLASRP)
Alternative Name:	SFRS16 ( <a href="#">CLASRP Products</a> )

## Target Details

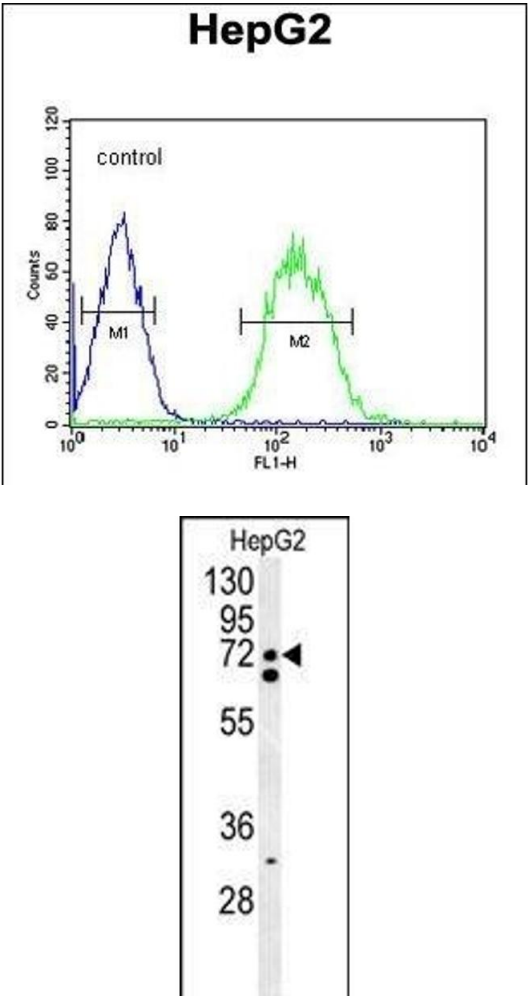
Background:	SFRS16 is probably functions as an alternative splicing regulator. SFRS16 may regulate the mRNA splicing of genes such as CLK1. This may act by regulating members of the CLK kinase family.
Molecular Weight:	77161
Gene ID:	11129
NCBI Accession:	<a href="#">NP_001265368</a> , <a href="#">NP_008987</a>
UniProt:	<a href="#">Q8N2M8</a>

## Application Details

Application Notes:	WB: 1:1000. FC: 1:10~50
Restrictions:	For Research Use only

## Handling

Format:	Liquid
Buffer:	Purified polyclonal antibody supplied in PBS with 0.09 % (W/V) sodium azide.
Preservative:	Sodium azide
Precaution of Use:	This product contains Sodium azide: a POISONOUS AND HAZARDOUS SUBSTANCE which should be handled by trained staff only.
Storage:	4 °C, -20 °C
Storage Comment:	Maintain refrigerated at 2-8 °C for up to 6 months. For long term storage store at -20 °C in small aliquots to prevent freeze-thaw cycles.
Expiry Date:	6 months



Flow Cytometry

**Image 1.** SFRS16 Antibody (Center) (ABIN651544 and ABIN2840292) flow cytometric analysis of HepG2 cells (right histogram) compared to a negative control cell (left histogram).FITC-conjugated goat-anti-rabbit secondary antibodies were used for the analysis.

Western Blotting

**Image 2.** SFRS16 Antibody (Center) (ABIN651544 and ABIN2840292) western blot analysis in HepG2 cell line lysates (35 µg/lane).This demonstrates the SFRS16 antibody detected the SFRS16 protein (arrow).