

Datasheet for ABIN651547
anti-SLC47A1 antibody (C-Term)

3 Images

[Go to Product page](#)

Overview

Quantity:	400 µL
Target:	SLC47A1
Binding Specificity:	AA 492-519, C-Term
Reactivity:	Human
Host:	Rabbit
Clonality:	Polyclonal
Conjugate:	This SLC47A1 antibody is un-conjugated
Application:	Western Blotting (WB), Immunohistochemistry (Paraffin-embedded Sections) (IHC (p))

Product Details

Immunogen:	This SLC47A1 antibody is generated from rabbits immunized with a KLH conjugated synthetic peptide between 492-519 amino acids from the C-terminal region of human SLC47A1.
Clone:	RB26908
Isotype:	Ig Fraction
Purification:	This antibody is purified through a protein A column, followed by peptide affinity purification.

Target Details

Target:	SLC47A1
Alternative Name:	SLC47A1 (SLC47A1 Products)
Background:	SLC47A1 is located within the Smith-Magenis syndrome region on chromosome 17. It encodes

Target Details

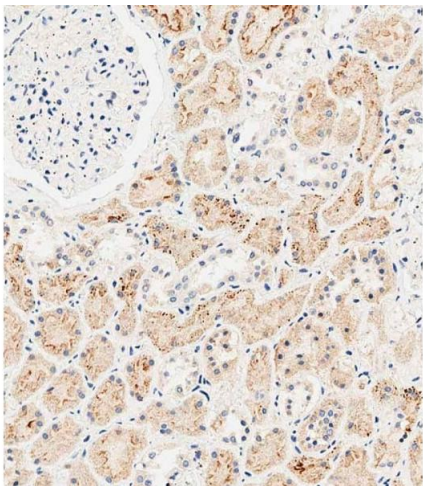
	a protein of unknown function.
Molecular Weight:	61922
Gene ID:	55244
NCBI Accession:	NP_060712
UniProt:	Q96FL8

Application Details

Application Notes:	WB: 1:2000. IHC-P-Leica: 1:500. IHC-P-Leica: 1:500
Restrictions:	For Research Use only

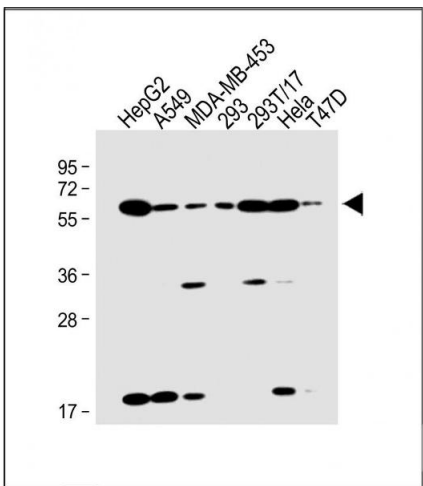
Handling

Format:	Liquid
Buffer:	Purified polyclonal antibody supplied in PBS with 0.09 % (W/V) sodium azide.
Preservative:	Sodium azide
Precaution of Use:	This product contains Sodium azide: a POISONOUS AND HAZARDOUS SUBSTANCE which should be handled by trained staff only.
Storage:	4 °C,-20 °C
Storage Comment:	Maintain refrigerated at 2-8 °C for up to 6 months. For long term storage store at -20 °C in small aliquots to prevent freeze-thaw cycles.
Expiry Date:	6 months



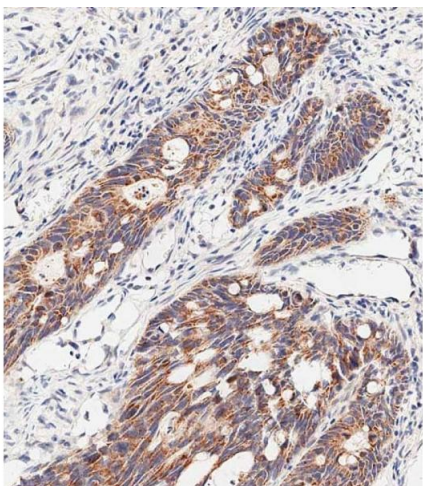
Immunohistochemistry (Paraffin-embedded Sections)

Image 1. Immunohistochemical analysis of paraffin-embedded human kidney tissue using (ABIN651547 and ABIN2840295) performed on the Leica® BOND RXm. Tissue was fixed with formaldehyde at room temperature, antigen retrieval was by heat mediation with a EDTA buffer (pH 9.0). Samples were incubated with primary Antibody (1:500) for 1 hours at room temperature. A undiluted biotinylated CRF Anti-Polyvalent HRP Polymer antibody was used as the secondary antibody.



Western Blotting

Image 2. All lanes : Anti-SLC47A1 Antibody (C-term) at 1:2000 dilution Lane 1: HepG2 whole cell lysate Lane 2: A549 whole cell lysate Lane 3: MDA-MB-453 whole cell lysate Lane 4: 293 whole cell lysate Lane 5: 293T/17 whole cell lysate Lane 6: HeLa whole cell lysate Lane 7: T47D whole cell lysate Lysates/proteins at 20 µg per lane. Secondary Goat Anti-Rabbit IgG, (H+L), Peroxidase conjugated at 1/10000 dilution. Predicted band size : 62 kDa Blocking/Dilution buffer: 5 % NFDM/TBST.



Immunohistochemistry (Paraffin-embedded Sections)

Image 3. Immunohistochemical analysis of paraffin-embedded human colon carcinoma tissue using (ABIN651547 and ABIN2840295) performed on the Leica® BOND RXm. Tissue was fixed with formaldehyde at room temperature, antigen retrieval was by heat mediation with a EDTA buffer (pH 9.0). Samples were incubated with primary Antibody (1:500) for 1 hours at room temperature. A undiluted biotinylated CRF Anti-Polyvalent HRP Polymer antibody was used as the secondary antibody.