

Datasheet for ABIN651548
anti-WDR18 antibody (C-Term)[Go to Product page](#)

2 Images

Overview

Quantity:	400 µL
Target:	WDR18
Binding Specificity:	AA 390-418, C-Term
Reactivity:	Human, Mouse
Host:	Rabbit
Clonality:	Polyclonal
Conjugate:	This WDR18 antibody is un-conjugated
Application:	Western Blotting (WB)

Product Details

Immunogen:	This WDR18 antibody is generated from rabbits immunized with a KLH conjugated synthetic peptide between 390-418 amino acids from the C-terminal region of human WDR18.
Clone:	RB30015
Isotype:	Ig Fraction
Predicted Reactivity:	B
Purification:	This antibody is purified through a protein A column, followed by peptide affinity purification.

Target Details

Target:	WDR18
Alternative Name:	WDR18 (WDR18 Products)

Target Details

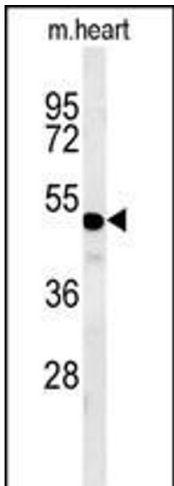
Background:	WDR18 encodes a member of the WD repeat protein family. WD repeats are minimally conserved regions of approximately 40 amino acids typically bracketed by gly-his and trp-aspartate (GH-WD), which may facilitate formation of heterotrimeric or multiprotein complexes. Members of this family are involved in a variety of cellular processes, including cell cycle progression, signal transduction, apoptosis, and gene regulation.
Molecular Weight:	47405
Gene ID:	57418
NCBI Accession:	NP_077005
UniProt:	Q9BV38

Application Details

Application Notes:	WB: 1:1000. WB: 1:1000
Restrictions:	For Research Use only

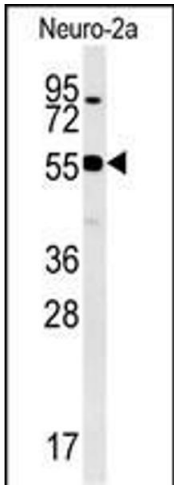
Handling

Format:	Liquid
Buffer:	Purified polyclonal antibody supplied in PBS with 0.09 % (W/V) sodium azide.
Preservative:	Sodium azide
Precaution of Use:	This product contains Sodium azide: a POISONOUS AND HAZARDOUS SUBSTANCE which should be handled by trained staff only.
Storage:	4 °C,-20 °C
Storage Comment:	Maintain refrigerated at 2-8 °C for up to 6 months. For long term storage store at -20 °C in small aliquots to prevent freeze-thaw cycles.
Expiry Date:	6 months



Western Blotting

Image 1. WDR18 Antibody (C-term) (ABIN651548 and ABIN2840296) western blot analysis in mouse heart tissue lysates (35 µg/lane). This demonstrates the WDR18 antibody detected the WDR18 protein (arrow).



Western Blotting

Image 2. WDR18 Antibody (C-term) (ABIN651548 and ABIN2840296) western blot analysis in Neuro-2a cell line lysates (35 µg/lane). This demonstrates the WDR18 antibody detected the WDR18 protein (arrow).