

Datasheet for ABIN651559
anti-TM2D3 antibody (N-Term)[Go to Product page](#)

1 Image

Overview

Quantity:	400 µL
Target:	TM2D3
Binding Specificity:	AA 22-50, N-Term
Reactivity:	Human
Host:	Rabbit
Clonality:	Polyclonal
Conjugate:	This TM2D3 antibody is un-conjugated
Application:	Western Blotting (WB)

Product Details

Immunogen:	This TM2D3 antibody is generated from rabbits immunized with a KLH conjugated synthetic peptide between 22-50 amino acids from the N-terminal region of human TM2D3.
Clone:	RB26083
Isotype:	Ig Fraction
Purification:	This antibody is purified through a protein A column, followed by peptide affinity purification.

Target Details

Target:	TM2D3
Alternative Name:	TM2D3 (TM2D3 Products)
Background:	The protein encoded by this gene contains a structural module related to that of the seven

Target Details

transmembrane domain G protein-coupled receptor superfamily. This protein has sequence and structural similarities to the beta-amyloid binding protein (BBP), but, unlike BBP, it does not regulate a response to beta-amyloid peptide. This protein may have regulatory roles in cell death or proliferation signal cascades. Several alternatively spliced transcript variants of this gene are described but the full length nature of some variants has not been determined. Multiple polyadenylation sites have been found in this gene. [provided by RefSeq].

Molecular Weight: 27118

Gene ID: 80213

NCBI Accession: [NP_079417](#), [NP_510883](#)

UniProt: [Q9BRN9](#)

Pathways: [SARS-CoV-2 Protein Interactome](#)

Application Details

Application Notes: WB: 1:1000

Restrictions: For Research Use only

Handling

Format: Liquid

Buffer: Purified polyclonal antibody supplied in PBS with 0.09 % (W/V) sodium azide.

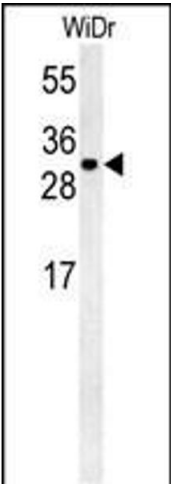
Preservative: Sodium azide

Precaution of Use: This product contains Sodium azide: a POISONOUS AND HAZARDOUS SUBSTANCE which should be handled by trained staff only.

Storage: 4 °C, -20 °C

Storage Comment: Maintain refrigerated at 2-8 °C for up to 6 months. For long term storage store at -20 °C in small aliquots to prevent freeze-thaw cycles.

Expiry Date: 6 months



Western Blotting

Image 1. TM2D3 Antibody (N-term) (ABIN651559 and ABIN2840300) western blot analysis in WiDr cell line lysates (35 µg/lane). This demonstrates the TM2D3 antibody detected the TM2D3 protein (arrow).