

Datasheet for ABIN651568  
**anti-SIKE1 antibody (C-Term)**[Go to Product page](#)

## 2 Images

## Overview

Quantity:	400 µL
Target:	SIKE1
Binding Specificity:	AA 154-182, C-Term
Reactivity:	Human
Host:	Rabbit
Clonality:	Polyclonal
Conjugate:	This SIKE1 antibody is un-conjugated
Application:	Western Blotting (WB), Immunohistochemistry (Paraffin-embedded Sections) (IHC (p))

## Product Details

Immunogen:	This SIKE antibody is generated from rabbits immunized with a KLH conjugated synthetic peptide between 154-182 amino acids from the C-terminal region of human SIKE.
Clone:	RB26399
Isotype:	Ig Fraction
Predicted Reactivity:	B, Rat
Purification:	This antibody is purified through a protein A column, followed by peptide affinity purification.

## Target Details

Target:	SIKE1
Alternative Name:	SIKE ( <a href="#">SIKE1 Products</a> )

## Target Details

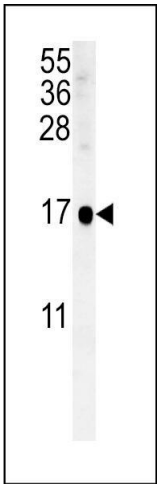
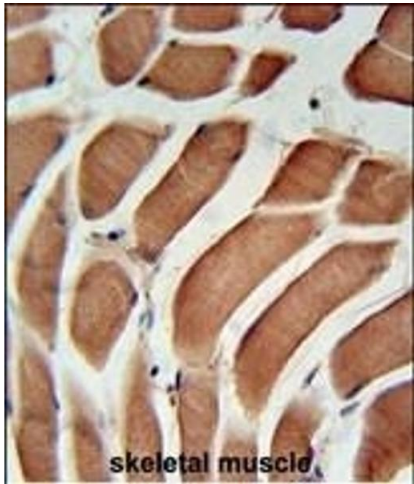
Background:	SIKE interacts with IKK-epsilon (IKBKE, MIM 605048) and TBK1 (MIM 604834) and acts as a suppressor of TLR3 (MIM 603029) and virus-triggered interferon activation pathways (Huang et al., 2005 [PubMed 16281057]).
Molecular Weight:	23721
Gene ID:	80143
NCBI Accession:	<a href="#">NP_001095866</a> , <a href="#">NP_079349</a>
UniProt:	<a href="#">Q9BRV8</a>

## Application Details

Application Notes:	WB: 1:1000. IHC-P: 1:50~100
Restrictions:	For Research Use only

## Handling

Format:	Liquid
Buffer:	Purified polyclonal antibody supplied in PBS with 0.09 % (W/V) sodium azide.
Preservative:	Sodium azide
Precaution of Use:	This product contains Sodium azide: a POISONOUS AND HAZARDOUS SUBSTANCE which should be handled by trained staff only.
Storage:	4 °C, -20 °C
Storage Comment:	Maintain refrigerated at 2-8 °C for up to 6 months. For long term storage store at -20 °C in small aliquots to prevent freeze-thaw cycles.
Expiry Date:	6 months



Immunohistochemistry (Paraffin-embedded Sections)

**Image 1.** SIKE Antibody (C-term) (ABIN651568 and ABIN2840305) immunohistochemistry analysis in formalin fixed and paraffin embedded human skeletal muscle followed by peroxidase conjugation of the secondary antibody and DAB staining. This data demonstrates the use of the SIKE Antibody (C-term) for immunohistochemistry. Clinical relevance has not been evaluated.

Western Blotting

**Image 2.** SIKE Antibody (C-term) (ABIN651568 and ABIN2840305) western blot analysis in NCI- cell line lysates (35 µg/lane). This demonstrates the SIKE antibody detected the SIKE protein (arrow).