

Datasheet for ABIN651569  
**anti-PYHIN1 antibody (N-Term)**



[Go to Product page](#)

3 Images

## Overview

Quantity:	400 µL
Target:	PYHIN1
Binding Specificity:	AA 26-55, N-Term
Reactivity:	Human
Host:	Rabbit
Clonality:	Polyclonal
Conjugate:	This PYHIN1 antibody is un-conjugated
Application:	Western Blotting (WB), Flow Cytometry (FACS), Immunohistochemistry (Paraffin-embedded Sections) (IHC (p))

## Product Details

Immunogen:	This PYHIN1 antibody is generated from rabbits immunized with a KLH conjugated synthetic peptide between 26-55 amino acids from the N-terminal region of human PYHIN1.
Clone:	RB26421
Isotype:	Ig Fraction
Purification:	This antibody is purified through a protein A column, followed by peptide affinity purification.

## Target Details

Target:	PYHIN1
Alternative Name:	PYHIN1 ( <a href="#">PYHIN1 Products</a> )

## Target Details

---

Background:	PYHIN1 belongs to the HIN200 family of interferon-inducible proteins that share a 200-amino acid signature motif at their C-terminal ends. HIN200 proteins are primarily nuclear and are involved in transcriptional regulation of genes important for cell cycle control, differentiation, and apoptosis (Ding et al., 2006 [PubMed 16479015]).
Molecular Weight:	55065
Gene ID:	149628
NCBI Accession:	<a href="#">NP_689714</a> , <a href="#">NP_945146</a> , <a href="#">NP_945147</a> , <a href="#">NP_945148</a>
UniProt:	<a href="#">Q6K0P9</a>

## Application Details

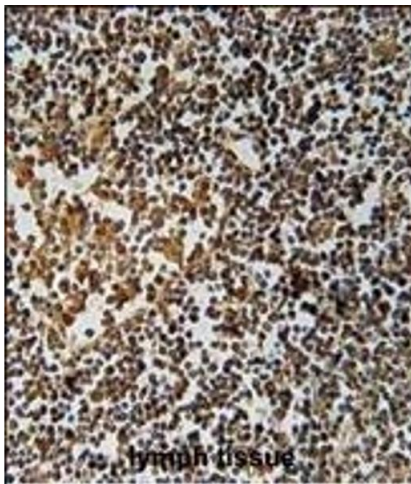
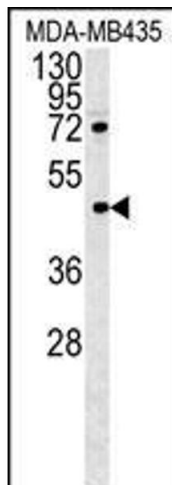
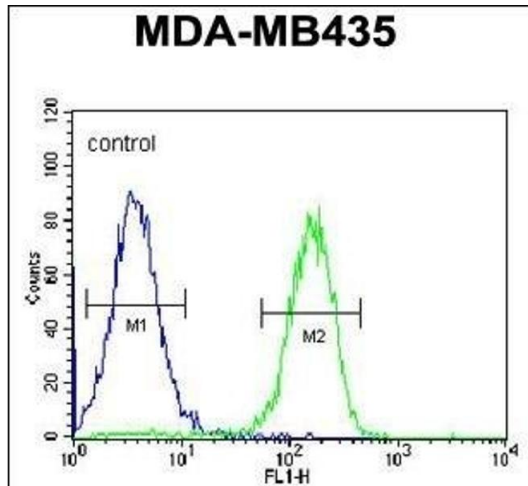
---

Application Notes:	WB: 1:1000. IHC-P: 1:50~100. FC: 1:10~50
Restrictions:	For Research Use only

## Handling

---

Format:	Liquid
Buffer:	Purified polyclonal antibody supplied in PBS with 0.09 % (W/V) sodium azide.
Preservative:	Sodium azide
Precaution of Use:	This product contains Sodium azide: a POISONOUS AND HAZARDOUS SUBSTANCE which should be handled by trained staff only.
Storage:	4 °C,-20 °C
Storage Comment:	Maintain refrigerated at 2-8 °C for up to 6 months. For long term storage store at -20 °C in small aliquots to prevent freeze-thaw cycles.
Expiry Date:	6 months



### Flow Cytometry

**Image 1.** PYHIN1 Antibody (N-term) (ABIN651569 and ABIN2840306) flow cytometric analysis of MDA-M cells (right histogram) compared to a negative control cell (left histogram). FITC-conjugated goat-anti-rabbit secondary antibodies were used for the analysis.

### Western Blotting

**Image 2.** PYHIN1 Antibody (N-term) (ABIN651569 and ABIN2840306) western blot analysis in MDA-M cell line lysates (35 µg/lane). This demonstrates the PYHIN1 antibody detected the PYHIN1 protein (arrow).

### Immunohistochemistry (Paraffin-embedded Sections)

**Image 3.** PYHIN1 Antibody (N-term) (ABIN651569 and ABIN2840306) immunohistochemistry analysis in formalin fixed and paraffin embedded human lymph tissue followed by peroxidase conjugation of the secondary antibody and DAB staining. This data demonstrates the use of the PYHIN1 Antibody (N-term) for immunohistochemistry. Clinical relevance has not been evaluated.