

Datasheet for ABIN651574  
**anti-LYRM2 antibody (N-Term)**[Go to Product page](#)

## 1 Image

## Overview

Quantity:	400 µL
Target:	LYRM2
Binding Specificity:	AA 19-47, N-Term
Reactivity:	Human, Mouse
Host:	Rabbit
Clonality:	Polyclonal
Conjugate:	This LYRM2 antibody is un-conjugated
Application:	Western Blotting (WB)

## Product Details

Immunogen:	This LYRM2 antibody is generated from rabbits immunized with a KLH conjugated synthetic peptide between 19-47 amino acids from the N-terminal region of human LYRM2.
Clone:	RB26520
Isotype:	Ig Fraction
Predicted Reactivity:	B
Purification:	This antibody is purified through a protein A column, followed by peptide affinity purification.

## Target Details

Target:	LYRM2
Alternative Name:	LYRM2 ( <a href="#">LYRM2 Products</a> )

## Target Details

Molecular Weight:	10449
Gene ID:	57226
NCBI Accession:	<a href="#">NP_065199</a>
UniProt:	<a href="#">Q9NU23</a>

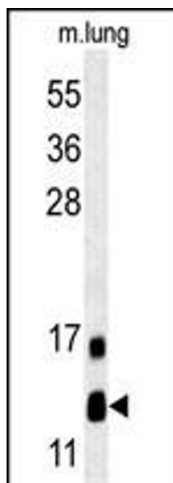
## Application Details

Application Notes:	WB: 1:1000
Restrictions:	For Research Use only

## Handling

Format:	Liquid
Buffer:	Purified polyclonal antibody supplied in PBS with 0.09 % (W/V) sodium azide.
Preservative:	Sodium azide
Precaution of Use:	This product contains Sodium azide: a POISONOUS AND HAZARDOUS SUBSTANCE which should be handled by trained staff only.
Storage:	4 °C,-20 °C
Storage Comment:	Maintain refrigerated at 2-8 °C for up to 6 months. For long term storage store at -20 °C in small aliquots to prevent freeze-thaw cycles.
Expiry Date:	6 months

## Images



### Western Blotting

**Image 1.** LYRM2 Antibody (N-term) (ABIN651574 and ABIN2840309) western blot analysis in mouse lung tissue lysates (35 µg/lane). This demonstrates the LYRM2 antibody detected LYRM2 protein (arrow).