

Datasheet for ABIN651585
anti-SDHAF1 antibody (AA 34-62)[Go to Product page](#)

2 Images

Overview

Quantity:	400 µL
Target:	SDHAF1
Binding Specificity:	AA 34-62
Reactivity:	Human
Host:	Rabbit
Clonality:	Polyclonal
Conjugate:	This SDHAF1 antibody is un-conjugated
Application:	Western Blotting (WB), Immunohistochemistry (Paraffin-embedded Sections) (IHC (p))

Product Details

Immunogen:	This SDHAF1 antibody is generated from rabbits immunized with a KLH conjugated synthetic peptide between 34-62 amino acids from the Central region of human SDHAF1.
Clone:	RB26596
Isotype:	Ig Fraction
Predicted Reactivity:	B, M, Rat
Purification:	This antibody is purified through a protein A column, followed by peptide affinity purification.

Target Details

Target:	SDHAF1
Alternative Name:	SDHAF1 (SDHAF1 Products)

Target Details

Background: The succinate dehydrogenase (SDH) complex (or complex II) of the mitochondrial respiratory chain is composed of 4 individual subunits. The protein encoded by this gene resides in the mitochondria, and is essential for SDH assembly, but does not physically associate with the complex in vivo. Mutations in this gene are associated with SDH-defective infantile leukoencephalopathy (mitochondrial complex II deficiency).

Molecular Weight: 12806

Gene ID: 644096

NCBI Accession: [NP_001036096](#)

UniProt: [A6NFY7](#)

Application Details

Application Notes: WB: 1:1000. IHC-P: 1:50~100

Restrictions: For Research Use only

Handling

Format: Liquid

Buffer: Purified polyclonal antibody supplied in PBS with 0.09 % (W/V) sodium azide.

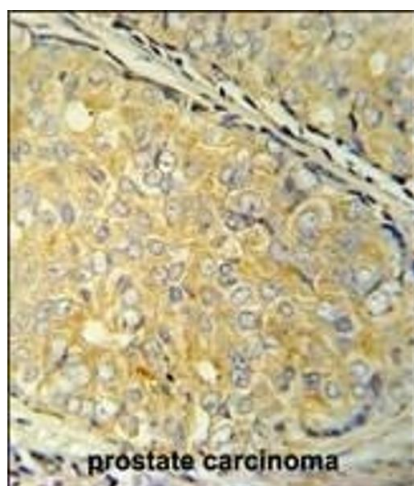
Preservative: Sodium azide

Precaution of Use: This product contains Sodium azide: a POISONOUS AND HAZARDOUS SUBSTANCE which should be handled by trained staff only.

Storage: 4 °C,-20 °C

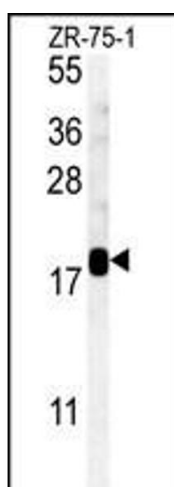
Storage Comment: Maintain refrigerated at 2-8 °C for up to 6 months. For long term storage store at -20 °C in small aliquots to prevent freeze-thaw cycles.

Expiry Date: 6 months



Immunohistochemistry (Paraffin-embedded Sections)

Image 1. SDHAF1 Antibody (Center) (ABIN651585 and ABIN2840312) immunohistochemistry analysis in formalin fixed and paraffin embedded human prostate carcinoma followed by peroxidase conjugation of the secondary antibody and DAB staining. This data demonstrates the use of the SDHAF1 Antibody (Center) for immunohistochemistry. Clinical relevance has not been evaluated.



Western Blotting

Image 2. SDHAF1 Antibody (Center) (ABIN651585 and ABIN2840312) western blot analysis in ZR-75-1 cell line lysates (35 µg/lane). This demonstrates the SDHAF1 antibody detected the SDHAF1 protein (arrow).