



[Go to Product page](#)

Datasheet for ABIN651593

anti-ARMC5 antibody (C-Term)

3 Images

Overview

Quantity:	400 µL
Target:	ARMC5
Binding Specificity:	AA 599-628, C-Term
Reactivity:	Human, Mouse
Host:	Rabbit
Clonality:	Polyclonal
Conjugate:	This ARMC5 antibody is un-conjugated
Application:	Western Blotting (WB), Flow Cytometry (FACS), Immunohistochemistry (Paraffin-embedded Sections) (IHC (p))

Product Details

Immunogen:	This ARMC5 antibody is generated from rabbits immunized with a KLH conjugated synthetic peptide between 599-628 amino acids from the C-terminal region of human ARMC5.
Clone:	RB26675
Isotype:	Ig Fraction
Purification:	This antibody is purified through a protein A column, followed by peptide affinity purification.

Target Details

Target:	ARMC5
Alternative Name:	ARMC5 (ARMC5 Products)

Target Details

Molecular Weight:	97682
Gene ID:	79798
NCBI Accession:	NP_001098717 , NP_079018
UniProt:	Q96C12

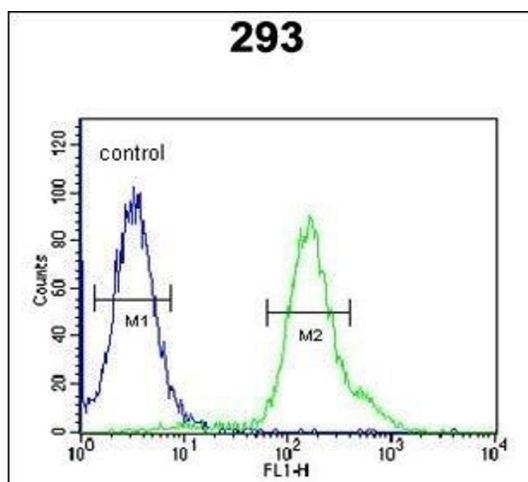
Application Details

Application Notes:	WB: 1:1000. IHC-P: 1:50~100. FC: 1:10~50
Restrictions:	For Research Use only

Handling

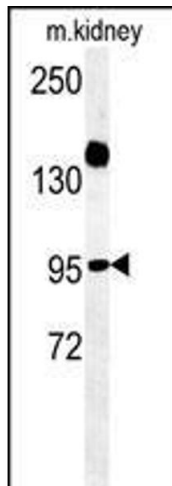
Format:	Liquid
Buffer:	Purified polyclonal antibody supplied in PBS with 0.09 % (W/V) sodium azide.
Preservative:	Sodium azide
Precaution of Use:	This product contains Sodium azide: a POISONOUS AND HAZARDOUS SUBSTANCE which should be handled by trained staff only.
Storage:	4 °C, -20 °C
Storage Comment:	Maintain refrigerated at 2-8 °C for up to 6 months. For long term storage store at -20 °C in small aliquots to prevent freeze-thaw cycles.
Expiry Date:	6 months

Images



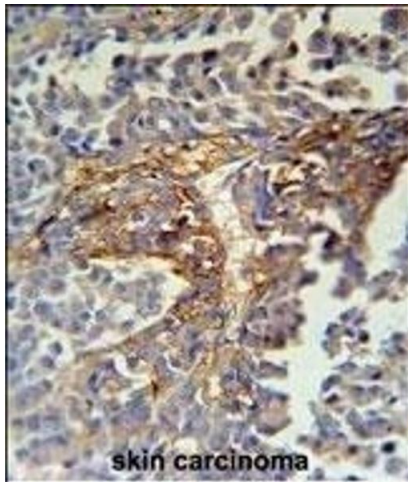
Flow Cytometry

Image 1. ARMC5 Antibody (C-term) (ABIN651593 and ABIN2840314) flow cytometric analysis of 293 cells (right histogram) compared to a negative control cell (left histogram). FITC-conjugated goat-anti-rabbit secondary antibodies were used for the analysis.



Western Blotting

Image 2. ARMC5 Antibody (C-term) (ABIN651593 and ABIN2840314) western blot analysis in mouse kidney tissue lysates (35 µg/lane). This demonstrates the ARMC5 antibody detected ARMC5 protein (arrow).



Immunohistochemistry (Paraffin-embedded Sections)

Image 3. ARMC5 Antibody (C-term) (ABIN651593 and ABIN2840314) immunohistochemistry analysis in formalin fixed and paraffin embedded human skin carcinoma followed by peroxidase conjugation of the secondary antibody and DAB staining. This data demonstrates the use of the ARMC5 Antibody (C-term) for immunohistochemistry. Clinical relevance has not been evaluated.