



[Go to Product page](#)

Datasheet for ABIN651600
anti-KCTD21 antibody (C-Term)

3 Images

Overview

Quantity:	400 µL
Target:	KCTD21
Binding Specificity:	AA 232-260, C-Term
Reactivity:	Human, Mouse
Host:	Rabbit
Clonality:	Polyclonal
Conjugate:	This KCTD21 antibody is un-conjugated
Application:	Western Blotting (WB), Flow Cytometry (FACS), Immunohistochemistry (Paraffin-embedded Sections) (IHC (p))

Product Details

Immunogen:	This KCTD21 antibody is generated from rabbits immunized with a KLH conjugated synthetic peptide between 232-260 amino acids from the C-terminal region of human KCTD21.
Clone:	RB26710
Isotype:	Ig Fraction
Purification:	This antibody is purified through a protein A column, followed by peptide affinity purification.

Target Details

Target:	KCTD21
Alternative Name:	KCTD21 (KCTD21 Products)

Target Details

Gene ID: 283219

NCBI Accession: [NP_001025030](#)

UniProt: [Q4G0X4](#)

Application Details

Application Notes: WB: 1:1000. IHC-P: 1:50~100. FC: 1:10~50

Restrictions: For Research Use only

Handling

Format: Liquid

Buffer: Purified polyclonal antibody supplied in PBS with 0.09 % (W/V) sodium azide.

Preservative: Sodium azide

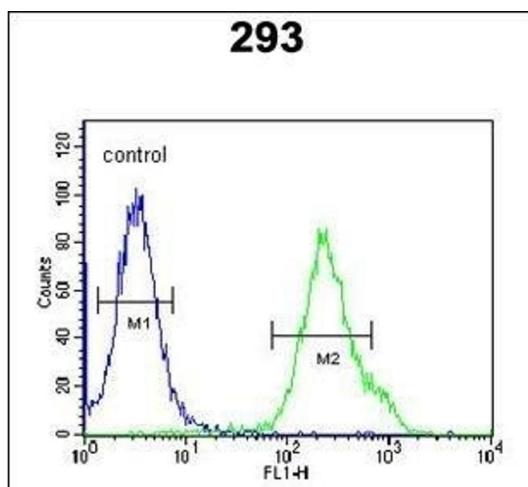
Precaution of Use: This product contains Sodium azide: a POISONOUS AND HAZARDOUS SUBSTANCE which should be handled by trained staff only.

Storage: 4 °C, -20 °C

Storage Comment: Maintain refrigerated at 2-8 °C for up to 6 months. For long term storage store at -20 °C in small aliquots to prevent freeze-thaw cycles.

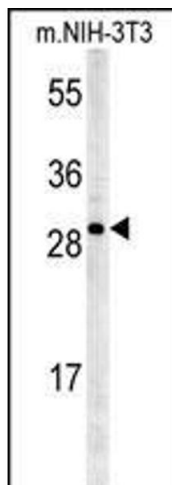
Expiry Date: 6 months

Images



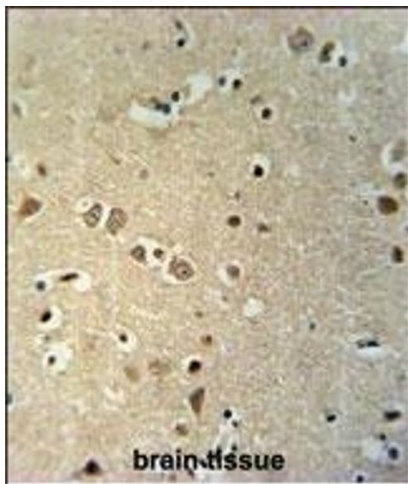
Flow Cytometry

Image 1. KCTD21 Antibody (C-term) (ABIN651600 and ABIN2840317) flow cytometric analysis of 293 cells (right histogram) compared to a negative control cell (left histogram). FITC-conjugated goat-anti-rabbit secondary antibodies were used for the analysis.



Western Blotting

Image 2. KCTD21 Antibody (C-term) (ABIN651600 and ABIN2840317) western blot analysis in mouse NIH-3T3 cell line lysates (35 µg/lane). This demonstrates the KCTD21 antibody detected the KCTD21 protein (arrow).



Immunohistochemistry (Paraffin-embedded Sections)

Image 3. KCTD21 Antibody (C-term) (ABIN651600 and ABIN2840317) immunohistochemistry analysis in formalin fixed and paraffin embedded human brain tissue followed by peroxidase conjugation of the secondary antibody and DAB staining. This data demonstrates the use of the KCTD21 Antibody (C-term) for immunohistochemistry. Clinical relevance has not been evaluated.