

Datasheet for ABIN651606

anti-PTAFR antibody (C-Term)[Go to Product page](#)**2** Images

Overview

Quantity:	400 µL
Target:	PTAFR
Binding Specificity:	AA 286-312, C-Term
Reactivity:	Human, Mouse
Host:	Rabbit
Clonality:	Polyclonal
Conjugate:	This PTAFR antibody is un-conjugated
Application:	Western Blotting (WB)

Product Details

Immunogen:	This PTAFR antibody is generated from rabbits immunized with a KLH conjugated synthetic peptide between 286-312 amino acids from the C-terminal region of human PTAFR.
Clone:	RB26788
Isotype:	Ig Fraction
Purification:	This antibody is purified through a protein A column, followed by peptide affinity purification.

Target Details

Target:	PTAFR
Alternative Name:	PTAFR (PTAFR Products)
Background:	PTAFR shows structural characteristics of the rhodopsin (MIM 180380) gene family and binds

Target Details

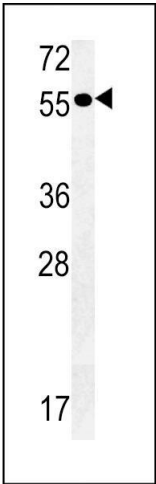
	platelet-activating factor (PAF). PAF is a phospholipid (1-0-alkyl-2-acetyl-sn-glycero-3-phosphorylcholine) that has been implicated as a mediator in diverse pathologic processes, such as allergy, asthma, septic shock, arterial thrombosis, and inflammatory processes.
Molecular Weight:	39203
Gene ID:	5724
NCBI Accession:	NP_000943 , NP_001158193 , NP_001158194 , NP_001158195
UniProt:	P25105
Pathways:	Activation of Innate immune Response , Cellular Response to Molecule of Bacterial Origin

Application Details

Application Notes:	WB: 1:1000. WB: 1:1000
Restrictions:	For Research Use only

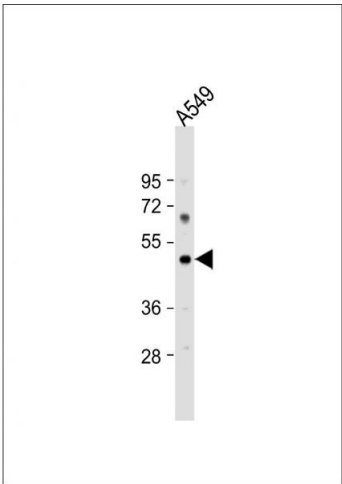
Handling

Format:	Liquid
Buffer:	Purified polyclonal antibody supplied in PBS with 0.09 % (W/V) sodium azide.
Preservative:	Sodium azide
Precaution of Use:	This product contains Sodium azide: a POISONOUS AND HAZARDOUS SUBSTANCE which should be handled by trained staff only.
Storage:	4 °C,-20 °C
Storage Comment:	Maintain refrigerated at 2-8 °C for up to 6 months. For long term storage store at -20 °C in small aliquots to prevent freeze-thaw cycles.
Expiry Date:	6 months



Western Blotting

Image 1. PTAFR Antibody (C-term) (ABIN651606 and ABIN2840321) western blot analysis in mouse heart tissue lysates (35 µg/lane). This demonstrates the PTAFR antibody detected PTAFR protein (arrow).



Western Blotting

Image 2. Anti-PTAFR Antibody (C-term) at 1:1000 dilution + A549 whole cell lysate Lysates/proteins at 20 µg per lane. Secondary Goat Anti-Rabbit IgG, (H+L), Peroxidase conjugated at 1/10000 dilution. Predicted band size : 39 kDa Blocking/Dilution buffer: 5 % NFDM/TBST.