

Datasheet for ABIN651607  
**anti-AMY2A antibody (C-Term)**[Go to Product page](#)

## 2 Images

## Overview

Quantity:	400 µL
Target:	AMY2A
Binding Specificity:	AA 484-511, C-Term
Reactivity:	Human, Mouse
Host:	Rabbit
Clonality:	Polyclonal
Conjugate:	This AMY2A antibody is un-conjugated
Application:	Western Blotting (WB), Immunofluorescence (IF)

## Product Details

Immunogen:	This AMY2A antibody is generated from rabbits immunized with a KLH conjugated synthetic peptide between 484-511 amino acids from the C-terminal region of human AMY2A.
Clone:	RB26793
Isotype:	Ig Fraction
Predicted Reactivity:	Pig
Purification:	This antibody is purified through a protein A column, followed by peptide affinity purification.

## Target Details

Target:	AMY2A
Alternative Name:	AMY2A ( <a href="#">AMY2A Products</a> )

## Target Details

**Background:** Amylases are secreted proteins that hydrolyze 1,4-alpha-glucoside bonds in oligosaccharides and polysaccharides, and thus catalyze the first step in digestion of dietary starch and glycogen. The human genome has a cluster of several amylase genes that are expressed at high levels in either salivary gland or pancreas. This gene encodes an amylase isoenzyme produced by the pancreas.

**Molecular Weight:** 57707

**Gene ID:** 279

**NCBI Accession:** [NP\\_000690](#)

**UniProt:** [P04746](#)

## Application Details

**Application Notes:** IF: 1:10~50. WB: 1:1000

**Restrictions:** For Research Use only

## Handling

**Format:** Liquid

**Buffer:** Purified polyclonal antibody supplied in PBS with 0.09 % (W/V) sodium azide.

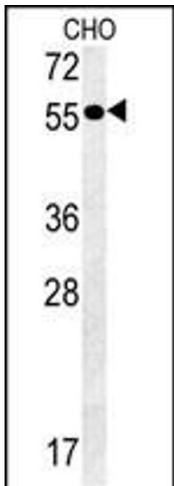
**Preservative:** Sodium azide

**Precaution of Use:** This product contains Sodium azide: a POISONOUS AND HAZARDOUS SUBSTANCE which should be handled by trained staff only.

**Storage:** 4 °C,-20 °C

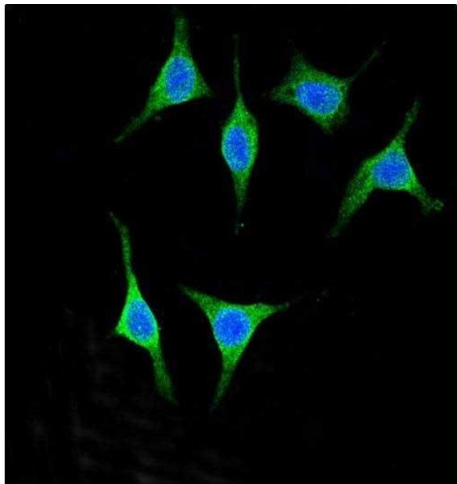
**Storage Comment:** Maintain refrigerated at 2-8 °C for up to 6 months. For long term storage store at -20 °C in small aliquots to prevent freeze-thaw cycles.

**Expiry Date:** 6 months



Western Blotting

**Image 1.** Y2A Antibody (C-term) (ABIN651607 and ABIN2840322) western blot analysis in CHO cell line lysates (35 µg/lane). This demonstrates the Y2A antibody detected the Y2A protein (arrow).



Immunofluorescence

**Image 2.** Confocal immunofluorescent analysis of Y2A Antibody (C-term) (ABIN651607 and ABIN2840322) with 293 cell followed by Alexa Fluor® 488-conjugated goat anti-rabbit IgG (green). DI was used to stain the cell nuclear (blue).