



[Go to Product page](#)

Datasheet for ABIN651625  
**anti-SHCBP1 antibody (C-Term)**

3 Images

### Overview

Quantity:	400 µL
Target:	SHCBP1
Binding Specificity:	AA 500-528, C-Term
Reactivity:	Human
Host:	Rabbit
Clonality:	Polyclonal
Conjugate:	This SHCBP1 antibody is un-conjugated
Application:	Western Blotting (WB), Flow Cytometry (FACS), Immunohistochemistry (Paraffin-embedded Sections) (IHC (p))

### Product Details

Immunogen:	This SHCBP1 antibody is generated from rabbits immunized with a KLH conjugated synthetic peptide between 500-528 amino acids from the C-terminal region of human SHCBP1.
Clone:	RB26872
Isotype:	Ig Fraction
Predicted Reactivity:	M
Purification:	This antibody is purified through a protein A column, followed by peptide affinity purification.

### Target Details

Target:	SHCBP1
---------	--------

## Target Details

---

Alternative Name: SHCBP1 ([SHCBP1 Products](#))

Molecular Weight: 75690

Gene ID: 79801

NCBI Accession: [NP\\_079021](#)

UniProt: [Q8NEM2](#)

## Application Details

---

Application Notes: WB: 1:1000. IHC-P: 1:50~100. FC: 1:10~50

Restrictions: For Research Use only

## Handling

---

Format: Liquid

Buffer: Purified polyclonal antibody supplied in PBS with 0.09 % (W/V) sodium azide.

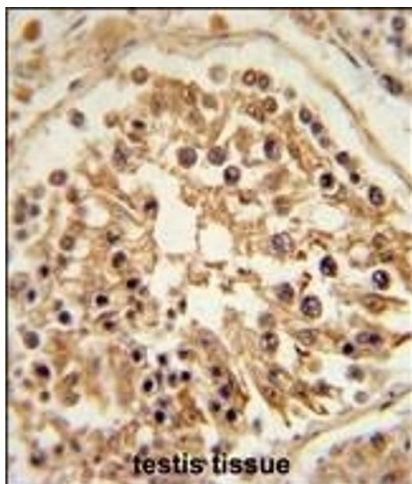
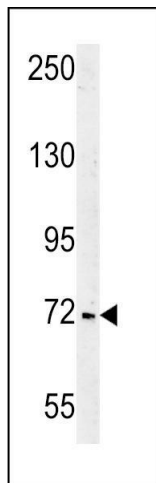
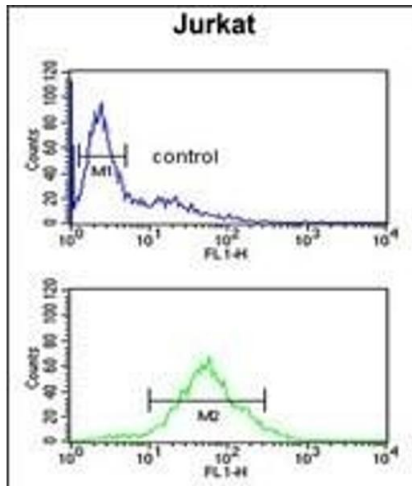
Preservative: Sodium azide

Precaution of Use: This product contains Sodium azide: a POISONOUS AND HAZARDOUS SUBSTANCE which should be handled by trained staff only.

Storage: 4 °C, -20 °C

Storage Comment: Maintain refrigerated at 2-8 °C for up to 6 months. For long term storage store at -20 °C in small aliquots to prevent freeze-thaw cycles.

Expiry Date: 6 months



### Flow Cytometry

**Image 1.** SHCBP1 Antibody (C-term) (ABIN651625 and ABIN2840332) flow cytometric analysis of Jurkat cells (bottom histogram) compared to a negative control cell (top histogram). FITC-conjugated goat-anti-rabbit secondary antibodies were used for the analysis.

### Western Blotting

**Image 2.** SHCBP1 Antibody (C-term) (ABIN651625 and ABIN2840332) western blot analysis in Jurkat cell line lysates (35 µg/lane). This demonstrates the SHCBP1 antibody detected the SHCBP1 protein (arrow).

### Immunohistochemistry (Paraffin-embedded Sections)

**Image 3.** SHCBP1 Antibody (C-term) (ABIN651625 and ABIN2840332) immunohistochemistry analysis in formalin fixed and paraffin embedded human testis tissue followed by peroxidase conjugation of the secondary antibody and DAB staining. This data demonstrates the use of the SHCBP1 Antibody (C-term) for immunohistochemistry. Clinical relevance has not been evaluated.