

Datasheet for ABIN651639  
**anti-PGD antibody (AA 236-265)**[Go to Product page](#)

## 4 Images

## Overview

Quantity:	400 µL
Target:	PGD
Binding Specificity:	AA 236-265
Reactivity:	Human, Mouse
Host:	Rabbit
Clonality:	Polyclonal
Conjugate:	This PGD antibody is un-conjugated
Application:	Western Blotting (WB), Flow Cytometry (FACS), Immunohistochemistry (Paraffin-embedded Sections) (IHC (p))

## Product Details

Immunogen:	This PGD antibody is generated from rabbits immunized with a KLH conjugated synthetic peptide between 236-265 amino acids from the Central region of human PGD.
Clone:	RB22902
Isotype:	Ig Fraction
Predicted Reactivity:	Pig, Rat, Sh
Purification:	This antibody is purified through a protein A column, followed by peptide affinity purification.

## Target Details

Target:	PGD
---------	-----

## Target Details

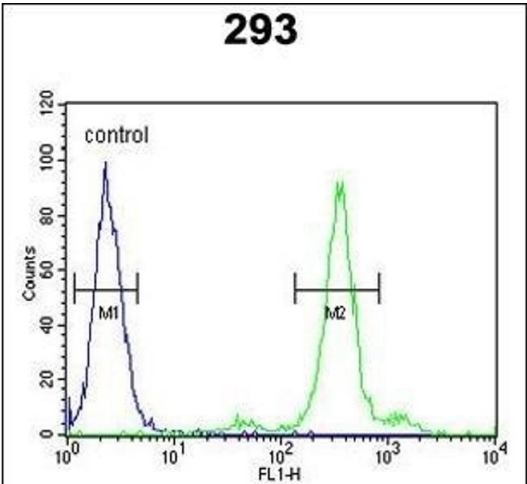
Alternative Name:	PGD ( <a href="#">PGD Products</a> )
Background:	6-phosphogluconate dehydrogenase is the second dehydrogenase in the pentose phosphate shunt. Deficiency of this enzyme is generally asymptomatic, and the inheritance of this disorder is autosomal dominant. Hemolysis results from combined deficiency of 6-phosphogluconate dehydrogenase and 6-phosphogluconolactonase suggesting a synergism of the two enzymopathies.
Molecular Weight:	53140
Gene ID:	5226
NCBI Accession:	<a href="#">NP_002622</a>
UniProt:	<a href="#">P52209</a>

## Application Details

Application Notes:	WB: 1:1000. WB: 1:1000. IHC-P: 1:50~100. FC: 1:10~50
Restrictions:	For Research Use only

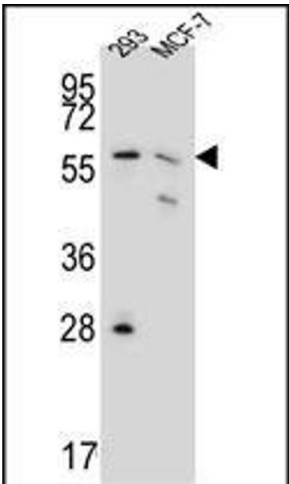
## Handling

Format:	Liquid
Buffer:	Purified polyclonal antibody supplied in PBS with 0.09 % (W/V) sodium azide.
Preservative:	Sodium azide
Precaution of Use:	This product contains Sodium azide: a POISONOUS AND HAZARDOUS SUBSTANCE which should be handled by trained staff only.
Storage:	4 °C,-20 °C
Storage Comment:	Maintain refrigerated at 2-8 °C for up to 6 months. For long term storage store at -20 °C in small aliquots to prevent freeze-thaw cycles.
Expiry Date:	6 months



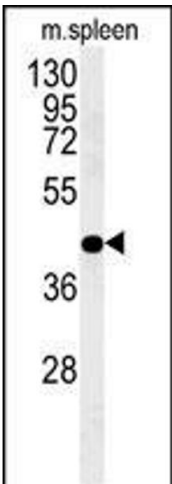
**Flow Cytometry**

**Image 1.** PGD Antibody (Center) (ABIN651639 and ABIN2840342) flow cytometric analysis of 293 cells (right histogram) compared to a negative control cell (left histogram).FITC-conjugated goat-anti-rabbit secondary antibodies were used for the analysis.



**Western Blotting**

**Image 2.** PGD Antibody (Center) (ABIN651639 and ABIN2840342) western blot analysis in 293,MCF-7 cell line lysates (35 µg/lane).This demonstrates the PGD antibody detected PGD protein (arrow).



**Western Blotting**

**Image 3.** PGD Antibody (Center) (ABIN651639 and ABIN2840342) western blot analysis in mouse spleen tissue lysates (35 µg/lane).This demonstrates the PGD antibody detected PGD protein (arrow).

Please check the [product details page](#) for more images. Overall 4 images are available for ABIN651639.