

Datasheet for ABIN651660
anti-TREM2 antibody (AA 22-50)[Go to Product page](#)

1 Image

Overview

Quantity:	200 µL
Target:	TREM2
Binding Specificity:	AA 22-50
Reactivity:	Human
Host:	Rabbit
Clonality:	Polyclonal
Conjugate:	This TREM2 antibody is un-conjugated
Application:	Western Blotting (WB)

Product Details

Immunogen:	This TREM2 antibody is generated from rabbits immunized with a KLH conjugated synthetic peptide between a range from 22-50 amino acids of human TREM2.
Clone:	RB26747
Isotype:	IgG
Purification:	This antibody is purified through a protein A column, followed by peptide affinity purification.

Target Details

Target:	TREM2
Alternative Name:	TREM2 (TREM2 Products)
Background:	TREM2 is a membrane protein that forms a receptor signaling complex with TYROBP. The

Target Details

encoded protein may be involved in chronic inflammation by triggering the production of constitutive inflammatory cytokines. Defects in this gene are a cause of polycystic lipomembranous osteodysplasia with sclerosing leukoencephalopathy (PLOSL).

Molecular Weight: 25447

Gene ID: 54209

NCBI Accession: [NP_001258750](#), [NP_061838](#)

UniProt: [Q9NZC2](#)

Application Details

Application Notes: WB: 1:1000

Restrictions: For Research Use only

Handling

Format: Liquid

Buffer: Purified polyclonal antibody supplied in PBS with 0.09 % (W/V) sodium azide.

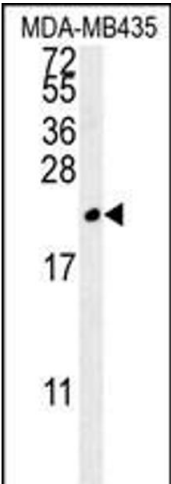
Preservative: Sodium azide

Precaution of Use: This product contains Sodium azide: a POISONOUS AND HAZARDOUS SUBSTANCE which should be handled by trained staff only.

Storage: 4 °C, -20 °C

Storage Comment: Maintain refrigerated at 2-8 °C for up to 6 months. For long term storage store at -20 °C in small aliquots to prevent freeze-thaw cycles.

Expiry Date: 6 months



Western Blotting

Image 1. TREM2 Antibody (N-term) ABIN651660 western blot analysis in MDA-M cell line lysates (35 µg/lane). This demonstrates the TREM2 antibody detected the TREM2 protein (arrow).