

Datasheet for ABIN651665

anti-GKAP1 antibody (C-Term)**3** Images[Go to Product page](#)

Overview

Quantity:	400 µL
Target:	GKAP1
Binding Specificity:	AA 331-359, C-Term
Reactivity:	Human
Host:	Rabbit
Clonality:	Polyclonal
Conjugate:	This GKAP1 antibody is un-conjugated
Application:	Western Blotting (WB), Immunohistochemistry (Paraffin-embedded Sections) (IHC (p))

Product Details

Immunogen:	This GKAP1 antibody is generated from rabbits immunized with a KLH conjugated synthetic peptide between 331-359 amino acids from the C-terminal region of human GKAP1.
Clone:	RB26856
Isotype:	Ig Fraction
Predicted Reactivity:	B, M, Rat
Purification:	This antibody is purified through a protein A column, followed by peptide affinity purification.

Target Details

Target:	GKAP1
Alternative Name:	GKAP1 (GKAP1 Products)

Target Details

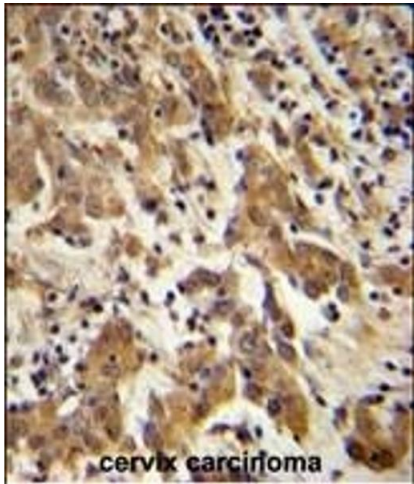
Background:	GKAP1 is a protein that is highly similar to the mouse cGMP-dependent protein kinase anchoring protein 42 kDa. The mouse protein has been found to localize with the Golgi and recruit cGMP-dependent protein kinase I alpha to the Golgi in mouse testes. It is thought to play a role in germ cell development. Transcript variants encoding different isoforms have been found for this gene.
Molecular Weight:	42078
Gene ID:	80318
NCBI Accession:	NP_001129425 , NP_079487
UniProt:	Q5VSY0

Application Details

Application Notes:	WB: 1:1000. WB: 1:1000. IHC-P: 1:50~100
Restrictions:	For Research Use only

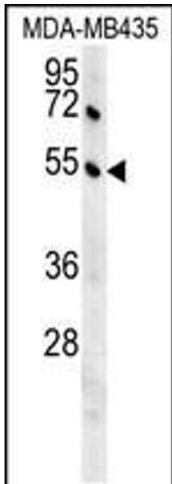
Handling

Format:	Liquid
Buffer:	Purified polyclonal antibody supplied in PBS with 0.09 % (W/V) sodium azide.
Preservative:	Sodium azide
Precaution of Use:	This product contains Sodium azide: a POISONOUS AND HAZARDOUS SUBSTANCE which should be handled by trained staff only.
Storage:	4 °C,-20 °C
Storage Comment:	Maintain refrigerated at 2-8 °C for up to 6 months. For long term storage store at -20 °C in small aliquots to prevent freeze-thaw cycles.
Expiry Date:	6 months



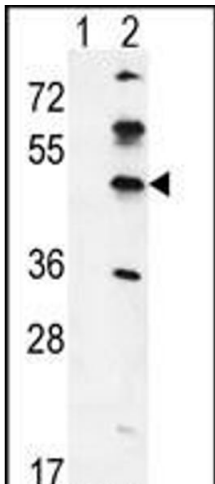
Immunohistochemistry (Paraffin-embedded Sections)

Image 1. GK Antibody (C-term) (ABIN651665 and ABIN2840349) immunohistochemistry analysis in formalin fixed and paraffin embedded human cervix carcinoma followed by peroxidase conjugation of the secondary antibody and DAB staining. This data demonstrates the use of the GK Antibody (C-term) for immunohistochemistry. Clinical relevance has not been evaluated.



Western Blotting

Image 2. GK Antibody (C-term) (ABIN651665 and ABIN2840349) western blot analysis in MDA-M cell line lysates (35 µg/lane). This demonstrates the GK antibody detected the GK protein (arrow).



Western Blotting

Image 3. Western blot analysis of GK (arrow) using rabbit polyclonal GK Antibody (C-term) (ABIN651665 and ABIN2840349). 293 cell lysates (2 µg/lane) either nontransfected (Lane 1) or transiently transfected (Lane 2) with the GK gene.