

Datasheet for ABIN651667
anti-INMT antibody (AA 101-128)[Go to Product page](#)**2** Images

Overview

Quantity:	400 µL
Target:	INMT
Binding Specificity:	AA 101-128
Reactivity:	Human, Mouse
Host:	Rabbit
Clonality:	Polyclonal
Conjugate:	This INMT antibody is un-conjugated
Application:	Western Blotting (WB), Immunohistochemistry (Paraffin-embedded Sections) (IHC (p))

Product Details

Immunogen:	This INMT antibody is generated from rabbits immunized with a KLH conjugated synthetic peptide between 101-128 amino acids from the Central region of human INMT.
Clone:	RB26875
Isotype:	Ig Fraction
Purification:	This antibody is purified through a protein A column, followed by peptide affinity purification.

Target Details

Target:	INMT
Alternative Name:	INMT (INMT Products)
Background:	N-methylation of endogenous and xenobiotic compounds is a major method by which they are

Target Details

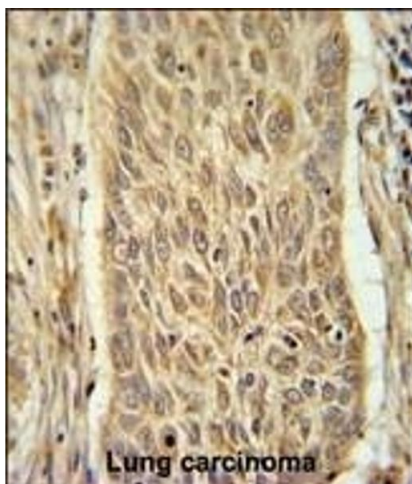
	degraded. This gene encodes an enzyme that N-methylates indoles such as tryptamine. [provided by RefSeq].
Molecular Weight:	28891
Gene ID:	11185
NCBI Accession:	NP_001186148 , NP_006765
UniProt:	O95050

Application Details

Application Notes:	WB: 1:1000. IHC-P: 1:50~100
Restrictions:	For Research Use only

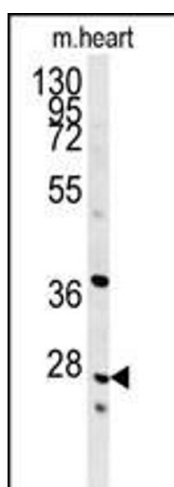
Handling

Format:	Liquid
Buffer:	Purified polyclonal antibody supplied in PBS with 0.09 % (W/V) sodium azide.
Preservative:	Sodium azide
Precaution of Use:	This product contains Sodium azide: a POISONOUS AND HAZARDOUS SUBSTANCE which should be handled by trained staff only.
Storage:	4 °C,-20 °C
Storage Comment:	Maintain refrigerated at 2-8 °C for up to 6 months. For long term storage store at -20 °C in small aliquots to prevent freeze-thaw cycles.
Expiry Date:	6 months



Immunohistochemistry (Paraffin-embedded Sections)

Image 1. INMT Antibody (Center) (ABIN651667 and ABIN2840351) immunohistochemistry analysis in formalin fixed and paraffin embedded human lung carcinoma followed by peroxidase conjugation of the secondary antibody and DAB staining. This data demonstrates the use of the INMT Antibody (Center) for immunohistochemistry. Clinical relevance has not been evaluated.



Western Blotting

Image 2. INMT Antibody (Center) (ABIN651667 and ABIN2840351) western blot analysis in mouse heart tissue lysates (35 µg/lane). This demonstrates the INMT antibody detected INMT protein (arrow).