

Datasheet for ABIN651670  
**anti-DKC1 antibody (AA 185-213)**

## 3 Images

[Go to Product page](#)

## Overview

Quantity:	400 µL
Target:	DKC1
Binding Specificity:	AA 185-213
Reactivity:	Human, Mouse
Host:	Rabbit
Clonality:	Polyclonal
Conjugate:	This DKC1 antibody is un-conjugated
Application:	Western Blotting (WB), Immunofluorescence (IF), Immunohistochemistry (Paraffin-embedded Sections) (IHC (p))

## Product Details

Immunogen:	This DKC1 antibody is generated from rabbits immunized with a KLH conjugated synthetic peptide between 185-213 amino acids from the Central region of human DKC1.
Clone:	RB26907
Isotype:	Ig Fraction
Purification:	This antibody is purified through a protein A column, followed by peptide affinity purification.

## Target Details

Target:	DKC1
Alternative Name:	DKC1 ( <a href="#">DKC1 Products</a> )

## Target Details

Background:	DKC1 is a member of the H/ACA snoRNPs (small nucleolar ribonucleoproteins) gene family. snoRNPs are involved in various aspects of rRNA processing and modification and have been classified into two families: C/D and H/ACA. The H/ACA snoRNPs also include the NOLA1, 2 and 3 proteins. The protein encoded by this gene and the three NOLA proteins localize to the dense fibrillar components of nucleoli and to coiled (Cajal) bodies in the nucleus. Both 18S rRNA production and rRNA pseudouridylation are impaired if any one of the four proteins is depleted. These four H/ACA snoRNP proteins are also components of the telomerase complex. The protein encoded by this gene is related to the <i>Saccharomyces cerevisiae</i> Cbf5p and <i>Drosophila melanogaster</i> Nop60B proteins. The gene lies in a tail-to-tail orientation with the palmitoylated erythrocyte membrane protein gene and is transcribed in a telomere to centromere direction. Both nucleotide substitutions and single trinucleotide repeat polymorphisms have been found in this gene. Mutations in this gene cause X-linked dyskeratosis congenita, a disease resulting in reticulate skin pigmentation, mucosal leukoplakia, nail dystrophy, and progressive bone marrow failure in most cases.
Molecular Weight:	57674
Gene ID:	1736
NCBI Accession:	<a href="#">NP_001354</a>
UniProt:	<a href="#">O60832</a>
Pathways:	<a href="#">Telomere Maintenance</a>

## Application Details

Application Notes:	IF: 1:10~50. WB: 1:1000. IHC-P: 1:50~100
Restrictions:	For Research Use only

## Handling

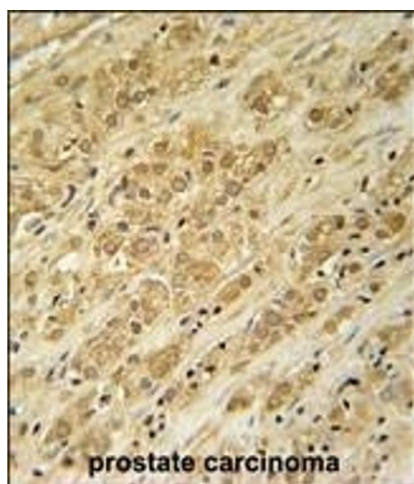
Format:	Liquid
Buffer:	Purified polyclonal antibody supplied in PBS with 0.09 % (W/V) sodium azide.
Preservative:	Sodium azide
Precaution of Use:	This product contains Sodium azide: a POISONOUS AND HAZARDOUS SUBSTANCE which should be handled by trained staff only.
Storage:	4 °C, -20 °C

## Handling

Storage Comment: Maintain refrigerated at 2-8 °C for up to 6 months. For long term storage store at -20 °C in small aliquots to prevent freeze-thaw cycles.

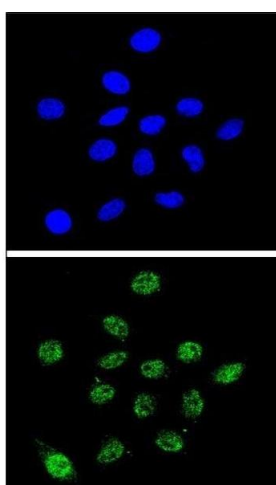
Expiry Date: 6 months

## Images



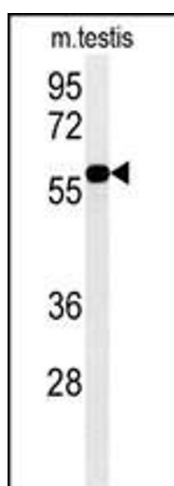
### Immunohistochemistry (Paraffin-embedded Sections)

**Image 1.** DKC1 Antibody (Center) (ABIN651670 and ABIN2840353) immunohistochemistry analysis in formalin fixed and paraffin embedded human prostate carcinoma followed by peroxidase conjugation of the secondary antibody and DAB staining. This data demonstrates the use of the DKC1 Antibody (Center) for immunohistochemistry. Clinical relevance has not been evaluated.



### Immunofluorescence

**Image 2.** Confocal immunofluorescent analysis of DKC1 Antibody (Center) (ABIN651670 and ABIN2840353) with 293 cell followed by Alexa Fluor® 488-conjugated goat anti-rabbit IgG (green). DAPI was used to stain the cell nuclear (blue).



### Western Blotting

**Image 3.** DKC1 Antibody (Center) (ABIN651670 and ABIN2840353) western blot analysis in mouse testis tissue lysates (35 µg/lane). This demonstrates the DKC1 antibody detected DKC1 protein (arrow).