

Datasheet for ABIN651679
anti-WDR43 antibody (C-Term)[Go to Product page](#)

3 Images

Overview

Quantity:	400 µL
Target:	WDR43
Binding Specificity:	AA 636-665, C-Term
Reactivity:	Human
Host:	Rabbit
Clonality:	Polyclonal
Conjugate:	This WDR43 antibody is un-conjugated
Application:	Western Blotting (WB), Flow Cytometry (FACS), Immunohistochemistry (Paraffin-embedded Sections) (IHC (p))

Product Details

Immunogen:	This WDR43 antibody is generated from rabbits immunized with a KLH conjugated synthetic peptide between 636-665 amino acids from the C-terminal region of human WDR43.
Clone:	RB26942
Isotype:	Ig Fraction
Purification:	This antibody is purified through a protein A column, followed by peptide affinity purification.

Target Details

Target:	WDR43
Alternative Name:	WDR43 (WDR43 Products)

Target Details

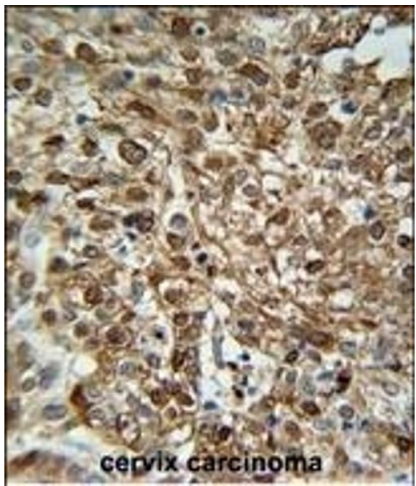
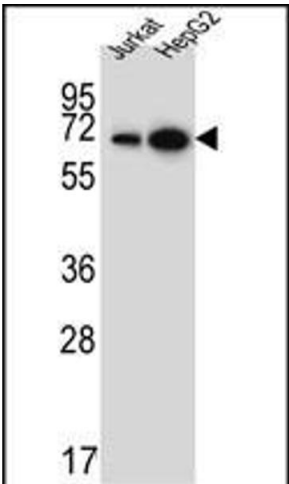
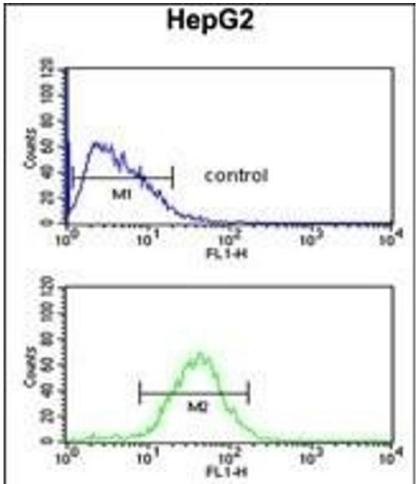
Background:	The function of WDR43 remains unknown.
Molecular Weight:	74891
Gene ID:	23160
NCBI Accession:	NP_055946
UniProt:	Q15061

Application Details

Application Notes:	WB: 1:1000. IHC-P: 1:50~100. FC: 1:10~50
Restrictions:	For Research Use only

Handling

Format:	Liquid
Buffer:	Purified polyclonal antibody supplied in PBS with 0.09 % (W/V) sodium azide.
Preservative:	Sodium azide
Precaution of Use:	This product contains Sodium azide: a POISONOUS AND HAZARDOUS SUBSTANCE which should be handled by trained staff only.
Storage:	4 °C,-20 °C
Storage Comment:	Maintain refrigerated at 2-8 °C for up to 6 months. For long term storage store at -20 °C in small aliquots to prevent freeze-thaw cycles.
Expiry Date:	6 months



Flow Cytometry

Image 1. WDR43 Antibody (C-term) (ABIN651679 and ABIN2840356) flow cytometric analysis of HepG2 cells (bottom histogram) compared to a negative control cell (top histogram). FITC-conjugated goat-anti-rabbit secondary antibodies were used for the analysis.

Western Blotting

Image 2. WDR43 Antibody (C-term) (ABIN651679 and ABIN2840356) western blot analysis in Jurkat, HepG2 cell line lysates (35 µg/lane). This demonstrates the WDR43 antibody detected the WDR43 protein (arrow).

Immunohistochemistry (Paraffin-embedded Sections)

Image 3. WDR43 Antibody (C-term) (ABIN651679 and ABIN2840356) immunohistochemistry analysis in formalin fixed and paraffin embedded human Cervix carcinoma followed by peroxidase conjugation of the secondary antibody and DAB staining. This data demonstrates the use of the WDR43 Antibody (C-term) for immunohistochemistry. Clinical relevance has not been evaluated.