

Datasheet for ABIN651691
anti-GLP-1 antibody (AA 85-112)

2 Images

[Go to Product page](#)

Overview

Quantity:	400 µL
Target:	GLP-1
Binding Specificity:	AA 85-112
Reactivity:	Human
Host:	Rabbit
Clonality:	Polyclonal
Conjugate:	This GLP-1 antibody is un-conjugated
Application:	Western Blotting (WB), Flow Cytometry (FACS)

Product Details

Immunogen:	This GLP1 antibody is generated from rabbits immunized with a KLH conjugated synthetic peptide between 85-112 amino acids from the Central region of human GLP1.
Clone:	RB26991
Isotype:	Ig Fraction
Purification:	This antibody is purified through a protein A column, followed by peptide affinity purification.

Target Details

Target:	GLP-1
Alternative Name:	GLP1 (GLP-1 Products)
Background:	Glucagon is initially synthesised as proglucagon, which is 180 amino acids in length and is

Target Details

cleaved proteolytically. It contains a region corresponding to Glucagon itself, in addition to a signal peptide, spacer regions and two Glucagon-like peptide sequences. GLP1 is encoded by the fourth exon of the six in the human Glucagon gene. It is 37 amino acids in length and has 48 % amino acid sequence homology to Glucagon, and is thought to have arisen by gene duplication. The sequence of GLP1 is conserved across many species, however, indicating that it has a particular function. GLP1 is a potent insulin secretagogue, renders pancreatic beta cells 'glucose-competent' and may be useful in the treatment of diabetes mellitus.

Gene ID: 100125288

NCBI Accession: [NP_001096637](#)

UniProt: [P0C6A0](#)

Application Details

Application Notes: WB: 1:1000. FC: 1:10~50

Restrictions: For Research Use only

Handling

Format: Liquid

Buffer: Purified polyclonal antibody supplied in PBS with 0.09 % (W/V) sodium azide.

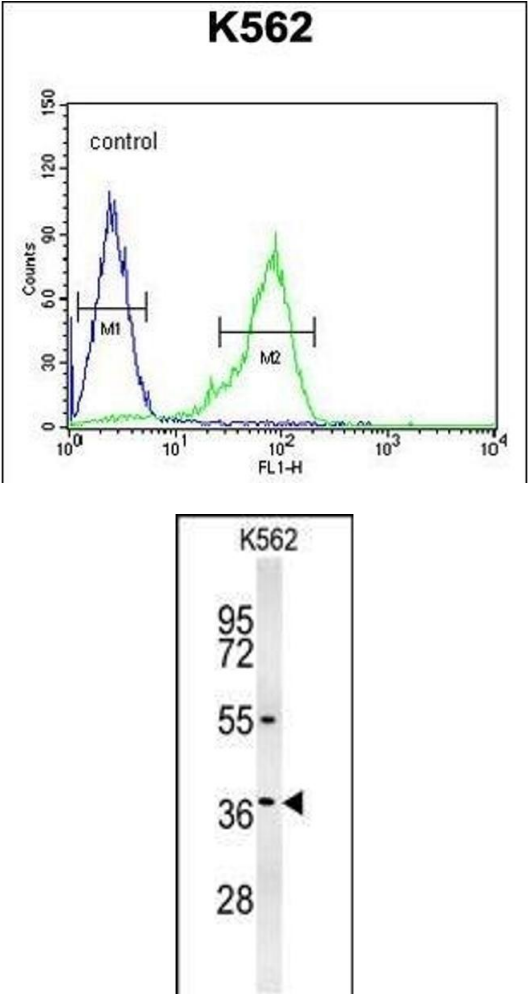
Preservative: Sodium azide

Precaution of Use: This product contains Sodium azide: a POISONOUS AND HAZARDOUS SUBSTANCE which should be handled by trained staff only.

Storage: 4 °C, -20 °C

Storage Comment: Maintain refrigerated at 2-8 °C for up to 6 months. For long term storage store at -20 °C in small aliquots to prevent freeze-thaw cycles.

Expiry Date: 6 months



Flow Cytometry

Image 1. GLP1 Antibody (Center) (ABIN651691 and ABIN2840362) flow cytometric analysis of K562 cells (right histogram) compared to a negative control cell (left histogram).FITC-conjugated goat-anti-rabbit secondary antibodies were used for the analysis.

Western Blotting

Image 2. GLP1 Antibody (Center) (ABIN651691 and ABIN2840362) western blot analysis in K562 cell line lysates (35 µg/lane).This demonstrates the GLP1 antibody detected the GLP1 protein (arrow).