

Datasheet for ABIN651695

anti-SPATA13 antibody (AA 204-232)**3** Images[Go to Product page](#)

Overview

Quantity:	400 µL
Target:	SPATA13
Binding Specificity:	AA 204-232
Reactivity:	Human
Host:	Rabbit
Clonality:	Polyclonal
Conjugate:	This SPATA13 antibody is un-conjugated
Application:	Western Blotting (WB), Flow Cytometry (FACS), Immunohistochemistry (Paraffin-embedded Sections) (IHC (p))

Product Details

Immunogen:	This SPT13 antibody is generated from rabbits immunized with a KLH conjugated synthetic peptide between 204-232 amino acids from the Central region of human SPT13.
Clone:	RB27015
Isotype:	Ig Fraction
Purification:	This antibody is purified through a protein A column, followed by peptide affinity purification.

Target Details

Target:	SPATA13
Alternative Name:	SPT13 (SPATA13 Products)

Target Details

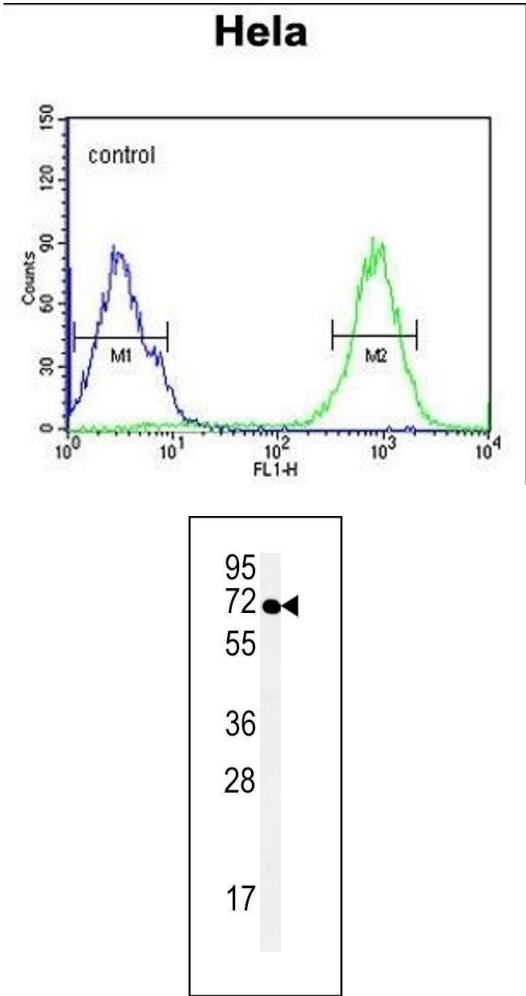
Background:	The function of SPT13 remains unknown.
Molecular Weight:	74820
Gene ID:	221178
NCBI Accession:	NP_001159743 , NP_694568
UniProt:	Q96N96

Application Details

Application Notes:	WB: 1:1000. IHC-P: 1:50~100. FC: 1:10~50
Restrictions:	For Research Use only

Handling

Format:	Liquid
Buffer:	Purified polyclonal antibody supplied in PBS with 0.09 % (W/V) sodium azide.
Preservative:	Sodium azide
Precaution of Use:	This product contains Sodium azide: a POISONOUS AND HAZARDOUS SUBSTANCE which should be handled by trained staff only.
Storage:	4 °C,-20 °C
Storage Comment:	Maintain refrigerated at 2-8 °C for up to 6 months. For long term storage store at -20 °C in small aliquots to prevent freeze-thaw cycles.
Expiry Date:	6 months

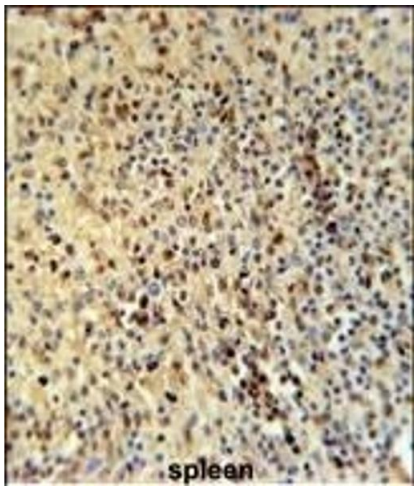


Flow Cytometry

Image 1. SPT13 Antibody (Center) (ABIN651695 and ABIN2840364) flow cytometric analysis of Hela cells (right histogram) compared to a negative control cell (left histogram). FITC-conjugated goat-anti-rabbit secondary antibodies were used for the analysis.

Western Blotting

Image 2. SPT13 Antibody (Center) (ABIN651695 and ABIN2840364) western blot analysis in Hela cell line lysates (35 µg/lane). This demonstrates the SPT13 antibody detected the SPT13 protein (arrow).



Immunohistochemistry (Paraffin-embedded Sections)

Image 3. SPT13 Antibody (Center) (ABIN651695 and ABIN2840364) immunohistochemistry analysis in formalin fixed and paraffin embedded human spleen tissue followed by peroxidase conjugation of the secondary antibody and DAB staining. This data demonstrates the use of the SPT13 Antibody (Center) for immunohistochemistry. Clinical relevance has not been evaluated.