



## Datasheet for ABIN651699 anti-NPSR1-AS1 antibody (C-Term)



[Go to Product page](#)

### 2 Images

#### Overview

Quantity:	400 µL
Target:	NPSR1-AS1
Binding Specificity:	AA 495-523, C-Term
Reactivity:	Human
Host:	Rabbit
Clonality:	Polyclonal
Conjugate:	This NPSR1-AS1 antibody is un-conjugated
Application:	Western Blotting (WB), Flow Cytometry (FACS)

#### Product Details

Immunogen:	This AAA1 antibody is generated from rabbits immunized with a KLH conjugated synthetic peptide between 495-523 amino acids from the C-terminal region of human AAA1.
Clone:	RB27049
Isotype:	IgG
Purification:	This antibody is purified through a protein A column, followed by peptide affinity purification.

#### Target Details

Target:	NPSR1-AS1
Alternative Name:	AAA1 ( <a href="#">NPSR1-AS1 Products</a> )
Background:	SLC7A10, in association with 4F2HC (SLC3A2, MIM 158070), mediates high-affinity transport of

## Target Details

---

D-serine and several other neutral amino acids (Nakauchi et al., 2000 [PubMed 10863037]).

Molecular Weight: 56798

Gene ID: 56301

NCBI Accession: [NP\\_062823](#)

UniProt: [Q9NS82](#)

## Application Details

---

Application Notes: WB: 1:1000. FC: 1:10~50

Restrictions: For Research Use only

## Handling

---

Format: Liquid

Buffer: Purified polyclonal antibody supplied in PBS with 0.09 % (W/V) sodium azide.

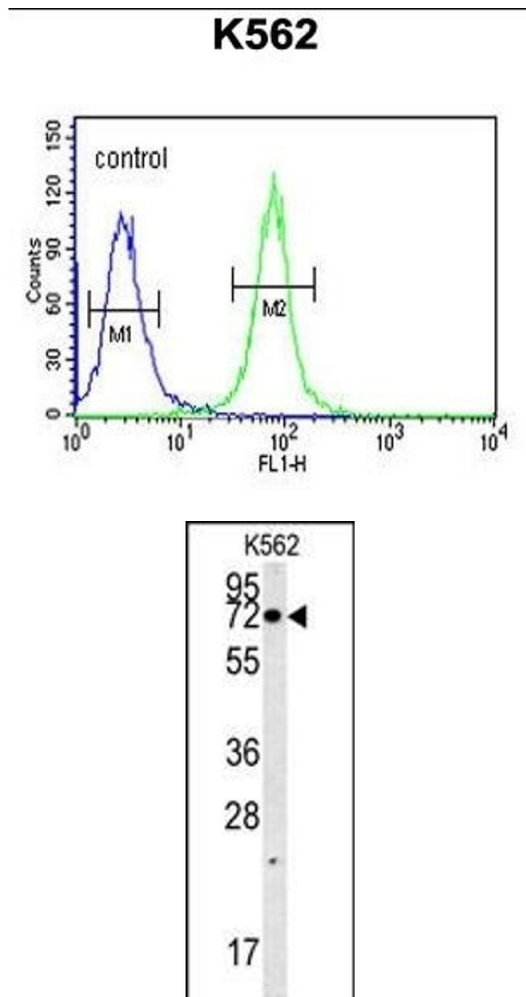
Preservative: Sodium azide

Precaution of Use: This product contains Sodium azide: a POISONOUS AND HAZARDOUS SUBSTANCE which should be handled by trained staff only.

Storage: 4 °C, -20 °C

Storage Comment: Maintain refrigerated at 2-8 °C for up to 6 months. For long term storage store at -20 °C in small aliquots to prevent freeze-thaw cycles.

Expiry Date: 6 months



### Flow Cytometry

**Image 1.** A1 Antibody (C-term) (ABIN651699 and ABIN2840366) flow cytometric analysis of K562 cells (right histogram) compared to a negative control (left histogram). FITC-conjugated goat-anti-rabbit secondary antibodies were used for the analysis.

### Western Blotting

**Image 2.** A1 Antibody (C-term) (ABIN651699 and ABIN2840366) western blot analysis in K562 cell line lysates (35 µg/lane). This demonstrates the A1 antibody detected the A1 protein (arrow).