

Datasheet for ABIN651719

anti-PMCH antibody (AA 94-122)**5** Images[Go to Product page](#)

Overview

Quantity:	400 µL
Target:	PMCH
Binding Specificity:	AA 94-122
Reactivity:	Human, Mouse
Host:	Rabbit
Clonality:	Polyclonal
Conjugate:	This PMCH antibody is un-conjugated
Application:	Western Blotting (WB), Flow Cytometry (FACS), Immunohistochemistry (Paraffin-embedded Sections) (IHC (p))

Product Details

Immunogen:	This PMCH antibody is generated from rabbits immunized with a KLH conjugated synthetic peptide between 94-122 amino acids from the Central region of human PMCH.
Clone:	RB21251
Isotype:	Ig Fraction
Purification:	This antibody is purified through a protein A column, followed by peptide affinity purification.

Target Details

Target:	PMCH
Alternative Name:	PMCH (PMCH Products)

Target Details

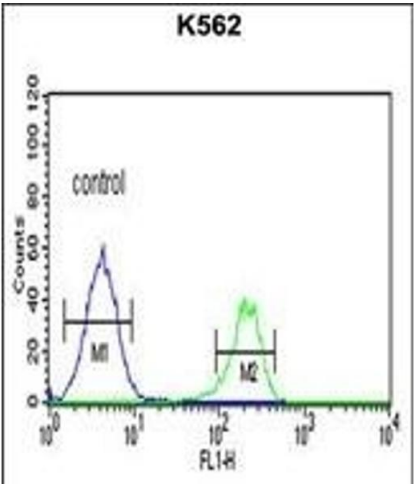
Background:	The melanin-concentrating hormone (MCH) is a cyclic neuropeptide isolated initially from salmon pituitary gland and later from rat hypothalamus (summarized by Nahon et al., 1992 [PubMed 1572663]). In mammals, MCH perikarya are confined largely to the lateral hypothalamus and zona incerta area with extensive neuronal projections throughout the brain, including the neurohypophysis. The anatomic distribution suggests a neurotransmitter or neuromodulator role for MCH in a broad array of neuronal functions directed toward the regulation of goal-directed behavior, such as food intake, and general arousal. MCH and 2 other putative neuropeptides, NEI and NGE, are encoded by the same precursor and appear colocalized in nerve cells and in many instances within the projections. The precursor is designated pro-melanin-concentrating hormone (PMCH).
Molecular Weight:	18679
Gene ID:	5367
NCBI Accession:	NP_002665
UniProt:	P20382
Pathways:	Carbohydrate Homeostasis , Feeding Behaviour

Application Details

Application Notes:	WB: 1:1000. WB: 1:1000. WB: 1:1000. IHC-P: 1:50~100. FC: 1:10~50
Restrictions:	For Research Use only

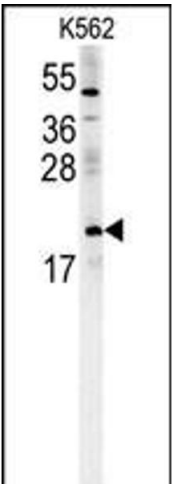
Handling

Format:	Liquid
Buffer:	Purified polyclonal antibody supplied in PBS with 0.09 % (W/V) sodium azide.
Preservative:	Sodium azide
Precaution of Use:	This product contains Sodium azide: a POISONOUS AND HAZARDOUS SUBSTANCE which should be handled by trained staff only.
Storage:	4 °C,-20 °C
Storage Comment:	Maintain refrigerated at 2-8 °C for up to 6 months. For long term storage store at -20 °C in small aliquots to prevent freeze-thaw cycles.
Expiry Date:	6 months



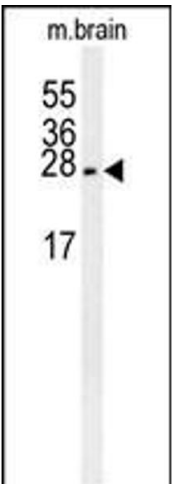
Flow Cytometry

Image 1. CH Antibody (Center) (ABIN651719 and ABIN2840373) flow cytometric analysis of K562 cells (right histogram) compared to a negative control cell (left histogram). FITC-conjugated goat-anti-rabbit secondary antibodies were used for the analysis.



Western Blotting

Image 2. CH Antibody (Center) (ABIN651719 and ABIN2840373) western blot analysis in K562 cell line lysates (15 μ g/lane). This demonstrates the CH antibody detected the CH protein (arrow).



Western Blotting

Image 3. CH Antibody (Center) (ABIN651719 and ABIN2840373) western blot analysis in mouse brain tissue lysates (15 μ g/lane). This demonstrates the CH antibody detected the CH protein (arrow).

Please check the [product details page](#) for more images. Overall 5 images are available for ABIN651719.