



[Go to Product page](#)

Datasheet for ABIN651733
anti-EMX2 antibody (AA 111-138)

2 Images

Overview

Quantity:	400 µL
Target:	EMX2
Binding Specificity:	AA 111-138
Reactivity:	Human
Host:	Rabbit
Clonality:	Polyclonal
Conjugate:	This EMX2 antibody is un-conjugated
Application:	Western Blotting (WB), Flow Cytometry (FACS)

Product Details

Immunogen:	This EMX2 antibody is generated from rabbits immunized with a KLH conjugated synthetic peptide between 111-138 amino acids from the Central region of human EMX2.
Clone:	RB23776
Isotype:	Ig Fraction
Predicted Reactivity:	B, M
Purification:	This antibody is purified through a protein A column, followed by peptide affinity purification.

Target Details

Target:	EMX2
Alternative Name:	EMX2 (EMX2 Products)

Target Details

Background: This gene encodes a homeobox-containing transcription factor that is the homolog to the 'empty spiracles' gene in *Drosophila*. Research on this gene in humans has focused on its expression in three tissues: dorsal telencephalon, olfactory neuroepithelium, and urogenital system. It is expressed in the dorsal telencephalon during development in a low rostral-lateral to high caudal-medial gradient and is proposed to pattern the neocortex into defined functional areas. It is also expressed in embryonic and adult olfactory neuroepithelia where it complexes with eukaryotic translation initiation factor 4E (eIF4E) and possibly regulates mRNA transport or translation. In the developing urogenital system, it is expressed in epithelial tissues and is negatively regulated by HOXA10. Alternative splicing results in multiple transcript variants encoding distinct proteins.

Molecular Weight: 28303

Gene ID: 2018

NCBI Accession: [NP_001159396](#), [NP_004089](#)

UniProt: [Q04743](#)

Application Details

Application Notes: WB: 1:1000. FC: 1:10~50

Restrictions: For Research Use only

Handling

Format: Liquid

Buffer: Purified polyclonal antibody supplied in PBS with 0.09 % (W/V) sodium azide.

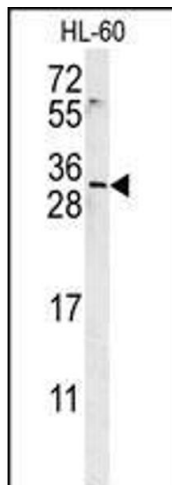
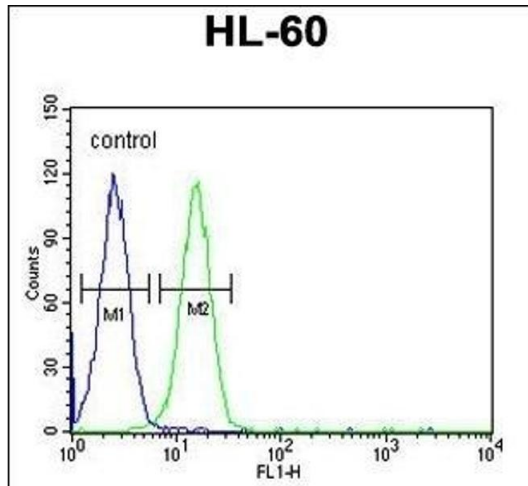
Preservative: Sodium azide

Precaution of Use: This product contains Sodium azide: a POISONOUS AND HAZARDOUS SUBSTANCE which should be handled by trained staff only.

Storage: 4 °C, -20 °C

Storage Comment: Maintain refrigerated at 2-8 °C for up to 6 months. For long term storage store at -20 °C in small aliquots to prevent freeze-thaw cycles.

Expiry Date: 6 months



Flow Cytometry

Image 1. EMX2 Antibody (Center) (ABIN651733 and ABIN2840380) flow cytometric analysis of HL-60 cells (right histogram) compared to a negative control cell (left histogram). FITC-conjugated goat-anti-rabbit secondary antibodies were used for the analysis.

Western Blotting

Image 2. EMX2 Antibody (Center) (ABIN651733 and ABIN2840380) western blot analysis in HL-60 cell line lysates (15 µg/lane). This demonstrates the EMX2 antibody detected the EMX2 protein (arrow).