

Datasheet for ABIN651737  
**anti-SWSAP1 antibody (AA 84-110)**[Go to Product page](#)

## 2 Images

## Overview

Quantity:	400 µL
Target:	SWSAP1
Binding Specificity:	AA 84-110
Reactivity:	Human, Mouse
Host:	Rabbit
Clonality:	Polyclonal
Conjugate:	This SWSAP1 antibody is un-conjugated
Application:	Western Blotting (WB), Immunohistochemistry (Paraffin-embedded Sections) (IHC (p))

## Product Details

Immunogen:	This C19orf39 antibody is generated from rabbits immunized with a KLH conjugated synthetic peptide between 84-110 amino acids from the Central region of human C19orf39.
Clone:	RB26184
Isotype:	Ig Fraction
Purification:	This antibody is purified through a protein A column, followed by peptide affinity purification.

## Target Details

Target:	SWSAP1
Alternative Name:	C19orf39 ( <a href="#">SWSAP1 Products</a> )
Gene ID:	126074

## Target Details

NCBI Accession: [NP\\_787067](#)

UniProt: [Q6NVH7](#)

## Application Details

Application Notes: WB: 1:1000. IHC-P: 1:50~100

Restrictions: For Research Use only

## Handling

Format: Liquid

Buffer: Purified polyclonal antibody supplied in PBS with 0.09 % (W/V) sodium azide.

Preservative: Sodium azide

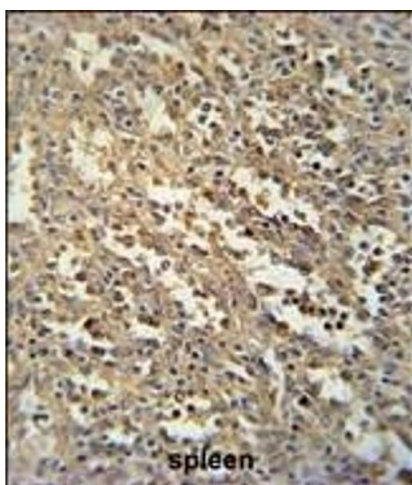
Precaution of Use: This product contains Sodium azide: a POISONOUS AND HAZARDOUS SUBSTANCE which should be handled by trained staff only.

Storage: 4 °C, -20 °C

Storage Comment: Maintain refrigerated at 2-8 °C for up to 6 months. For long term storage store at -20 °C in small aliquots to prevent freeze-thaw cycles.

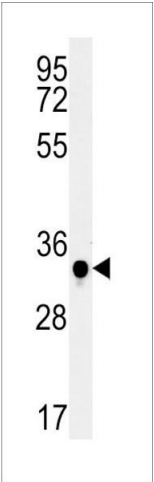
Expiry Date: 6 months

## Images



### Immunohistochemistry (Paraffin-embedded Sections)

**Image 1.** C19orf39 Antibody (Center) (ABIN651737 and ABIN2840382) immunohistochemistry analysis in formalin fixed and paraffin embedded human spleen tissue followed by peroxidase conjugation of the secondary antibody and DAB staining. This data demonstrates the use of the C19orf39 Antibody (Center) for immunohistochemistry. Clinical relevance has not been evaluated.



Western Blotting

**Image 2.** C19orf39 Antibody (Center) (ABIN651737 and ABIN2840382) western blot analysis in mouse spleen tissue lysates (15 µg/lane). This demonstrates the C19orf39 antibody detected C19orf39 protein (arrow).