

Datasheet for ABIN651743
anti-PDHA1 antibody (AA 228-255)[Go to Product page](#)

2 Images

Overview

Quantity:	400 µL
Target:	PDHA1
Binding Specificity:	AA 228-255
Reactivity:	Human
Host:	Rabbit
Clonality:	Polyclonal
Conjugate:	This PDHA1 antibody is un-conjugated
Application:	Western Blotting (WB), Flow Cytometry (FACS)

Product Details

Immunogen:	This PDHA1 antibody is generated from rabbits immunized with a KLH conjugated synthetic peptide between 228-255 amino acids from the Central region of human PDHA1.
Clone:	RB26430
Isotype:	Ig Fraction
Predicted Reactivity:	Zf, B, Pr, M, Pig, Rat
Purification:	This antibody is purified through a protein A column, followed by peptide affinity purification.

Target Details

Target:	PDHA1
Alternative Name:	BDHA1 (PDHA1 Products)

Target Details

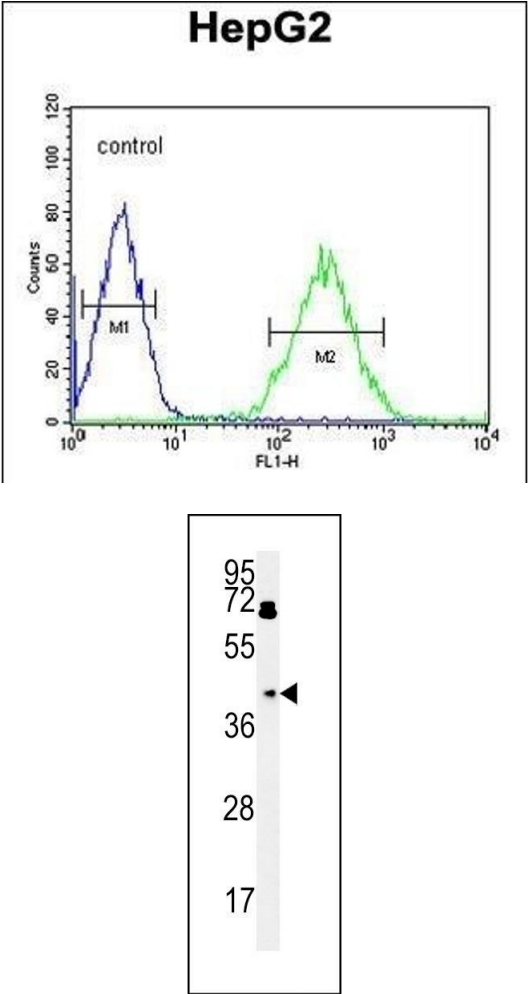
Background:	The pyruvate dehydrogenase (PDH) complex is a nuclear-encoded mitochondrial multienzyme complex that catalyzes the overall conversion of pyruvate to acetyl-CoA and CO(2), and provides the primary link between glycolysis and the tricarboxylic acid (TCA) cycle. The PDH complex is composed of multiple copies of three enzymatic components: pyruvate dehydrogenase (E1), dihydrolipoamide acetyltransferase (E2) and lipoamide dehydrogenase (E3). The E1 enzyme is a heterotetramer of two alpha and two beta subunits. This gene encodes the E1 alpha 1 subunit containing the E1 active site, and plays a key role in the function of the PDH complex.
Molecular Weight:	43296
Gene ID:	5160
NCBI Accession:	NP_000275 , NP_001166925 , NP_001166926 , NP_001166927
UniProt:	P08559
Pathways:	Warburg Effect

Application Details

Application Notes:	WB: 1:1000. FC: 1:10~50
Restrictions:	For Research Use only

Handling

Format:	Liquid
Buffer:	Purified polyclonal antibody supplied in PBS with 0.09 % (W/V) sodium azide.
Preservative:	Sodium azide
Precaution of Use:	This product contains Sodium azide: a POISONOUS AND HAZARDOUS SUBSTANCE which should be handled by trained staff only.
Storage:	4 °C, -20 °C
Storage Comment:	Maintain refrigerated at 2-8 °C for up to 6 months. For long term storage store at -20 °C in small aliquots to prevent freeze-thaw cycles.
Expiry Date:	6 months



Flow Cytometry

Image 1. BDHA1 Antibody (Center) (ABIN651743 and ABIN2840384) flow cytometric analysis of HepG2 cells (right histogram) compared to a negative control cell (left histogram).FITC-conjugated goat-anti-rabbit secondary antibodies were used for the analysis.

Western Blotting

Image 2. BDHA1 Antibody (Center) (ABIN651743 and ABIN2840384) western blot analysis in HepG2 cell line lysates (15 µg/lane).This demonstrates the BDHA1 antibody detected the BDHA1 protein (arrow).