

Datasheet for ABIN651760
anti-SMCR7L antibody (N-Term)[Go to Product page](#)

1 Image

Overview

Quantity:	400 µL
Target:	SMCR7L
Binding Specificity:	AA 105-132, N-Term
Reactivity:	Human, Mouse
Host:	Rabbit
Clonality:	Polyclonal
Conjugate:	This SMCR7L antibody is un-conjugated
Application:	Western Blotting (WB)

Product Details

Immunogen:	This SMCR7L antibody is generated from rabbits immunized with a KLH conjugated synthetic peptide between 105-132 amino acids from the N-terminal region of human SMCR7L.
Clone:	RB26921
Isotype:	Ig Fraction
Purification:	This antibody is purified through a protein A column, followed by peptide affinity purification.

Target Details

Target:	SMCR7L
Alternative Name:	SMCR7L (SMCR7L Products)
Background:	SMCR7L belongs to the SMCR7 family. The specific function of this protein remains unknown.

Target Details

Molecular Weight:	51293
Gene ID:	54471
NCBI Accession:	NP_061881
UniProt:	Q9NQG6

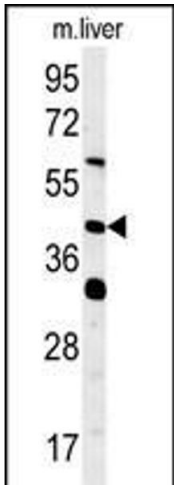
Application Details

Application Notes:	WB: 1:1000
Restrictions:	For Research Use only

Handling

Format:	Liquid
Buffer:	Purified polyclonal antibody supplied in PBS with 0.09 % (W/V) sodium azide.
Preservative:	Sodium azide
Precaution of Use:	This product contains Sodium azide: a POISONOUS AND HAZARDOUS SUBSTANCE which should be handled by trained staff only.
Storage:	4 °C,-20 °C
Storage Comment:	Maintain refrigerated at 2-8 °C for up to 6 months. For long term storage store at -20 °C in small aliquots to prevent freeze-thaw cycles.
Expiry Date:	6 months

Images



Western Blotting

Image 1. SMCR7L Antibody (N-term) (ABIN651760 and ABIN2840391) western blot analysis in mouse liver tissue lysates (15 µg/lane). This demonstrates the SMCR7L antibody detected SMCR7L protein (arrow).