

Datasheet for ABIN651772
anti-STEAP2 antibody (AA 229-258)[Go to Product page](#)

4 Images

Overview

Quantity:	400 µL
Target:	STEAP2
Binding Specificity:	AA 229-258
Reactivity:	Human, Mouse
Host:	Rabbit
Clonality:	Polyclonal
Conjugate:	This STEAP2 antibody is un-conjugated
Application:	Western Blotting (WB), Immunohistochemistry (Paraffin-embedded Sections) (IHC (p)), Flow Cytometry (FACS)

Product Details

Immunogen:	This STEAP2 antibody is generated from rabbits immunized with a KLH conjugated synthetic peptide between 229-258 amino acids of human STEAP2.
Clone:	RB26961
Isotype:	IgG
Purification:	This antibody is purified through a protein A column, followed by peptide affinity purification.

Target Details

Target:	STEAP2
Alternative Name:	STEAP2 (STEAP2 Products)

Target Details

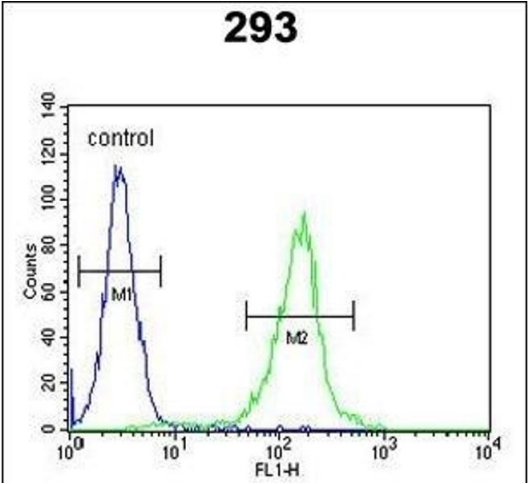
Background:	This gene is a member of the STEAP family and encodes a multi-pass membrane protein that localizes to the Golgi complex, the plasma membrane, and the vesicular tubular structures in the cytosol. A highly similar protein in mouse has both ferrireductase and cupric reductase activity, and stimulates the cellular uptake of both iron and copper in vitro. Increased transcriptional expression of the human gene is associated with prostate cancer progression. Alternate transcriptional splice variants, encoding different isoforms, have been characterized.
Molecular Weight:	56056
Gene ID:	261729
NCBI Accession:	NP_001035755 , NP_001035756 , NP_001231873 , NP_001231875 , NP_694544
UniProt:	Q8NFT2
Pathways:	Transition Metal Ion Homeostasis

Application Details

Application Notes:	WB: 1:500-1:1000. WB: 1:500. IHC-P: 1:50~100. FC: 1:10~50
Restrictions:	For Research Use only

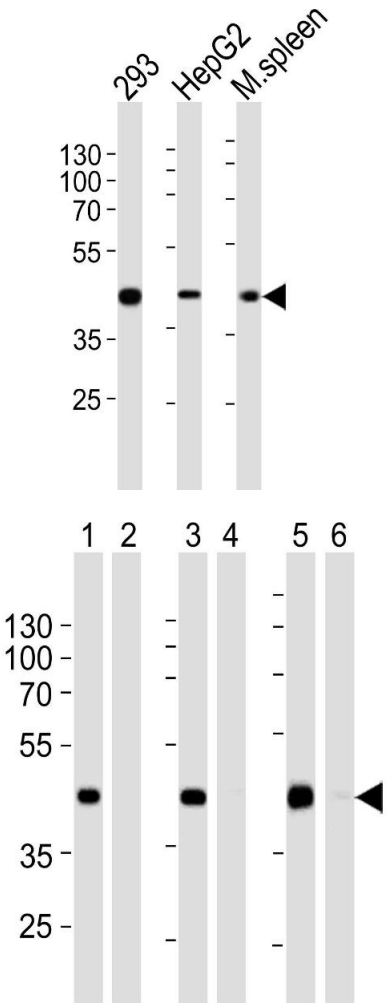
Handling

Format:	Liquid
Buffer:	Purified polyclonal antibody supplied in PBS with 0.09 % (W/V) sodium azide.
Preservative:	Sodium azide
Precaution of Use:	This product contains Sodium azide: a POISONOUS AND HAZARDOUS SUBSTANCE which should be handled by trained staff only.
Storage:	4 °C,-20 °C
Storage Comment:	Maintain refrigerated at 2-8 °C for up to 6 months. For long term storage store at -20 °C in small aliquots to prevent freeze-thaw cycles.
Expiry Date:	6 months



Flow Cytometry

Image 1. STE Antibody (Center) (ABIN651772 and ABIN2840394) flow cytometric analysis of 293 cells (right histogram) compared to a negative control cell (left histogram). FITC-conjugated goat-anti-rabbit secondary antibodies were used for the analysis.



Western Blotting

Image 2. Western blot analysis of lysates from 293, HepG2 cell line, mouse spleen tissue lysate (from left to right), using STE Antibody (Center) (ABIN651772 and ABIN2840394). (ABIN651772 and ABIN2840394) was diluted at 1:1000 at each lane. A goat anti-rabbit IgG H&L(HRP) at 1:10000 dilution was used as the secondary antibody. Lysates at 20 µg per lane.

Western Blotting

Image 3. Western blot analysis of extracts from 293 (lanes 1 and 2), HepG2 (lanes 3 and 4) cell line and mouse spleen (lanes 5 and 6) tissue lysate: 1, 3, 5. using STE Antibody (Center) (ABIN651772 and ABIN2840394), (1:500). 2, 4, 6. using STE Antibody (Center), preincubated with the control peptide antigen.

Please check the [product details page](#) for more images. Overall 4 images are available for ABIN651772.