



[Go to Product page](#)

Datasheet for ABIN651778

anti-CCDC106 antibody (AA 151-180)

3 Images

Overview

Quantity:	400 µL
Target:	CCDC106
Binding Specificity:	AA 151-180
Reactivity:	Human, Mouse
Host:	Rabbit
Clonality:	Polyclonal
Conjugate:	This CCDC106 antibody is un-conjugated
Application:	Western Blotting (WB), Flow Cytometry (FACS), Immunohistochemistry (Paraffin-embedded Sections) (IHC (p))

Product Details

Immunogen:	This CC106 antibody is generated from rabbits immunized with a KLH conjugated synthetic peptide between 151-180 amino acids from the Central region of human CC106.
Clone:	RB27021
Isotype:	Ig Fraction
Predicted Reactivity:	B
Purification:	This antibody is purified through a protein A column, followed by peptide affinity purification.

Target Details

Target:	CCDC106
---------	---------

Target Details

Alternative Name: CC106 ([CCDC106 Products](#))

Molecular Weight: 32032

Gene ID: 29903

NCBI Accession: [NP_037433](#)

UniProt: [Q9BWC9](#)

Application Details

Application Notes: WB: 1:1000. IHC-P: 1:50~100. FC: 1:10~50

Restrictions: For Research Use only

Handling

Format: Liquid

Buffer: Purified polyclonal antibody supplied in PBS with 0.09 % (W/V) sodium azide.

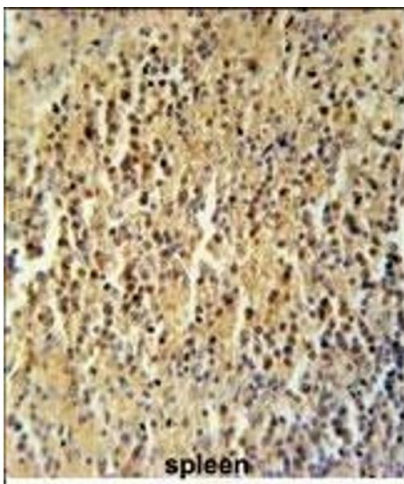
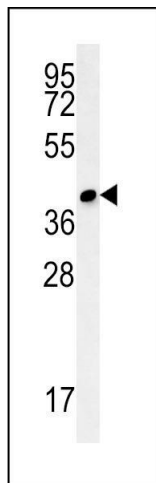
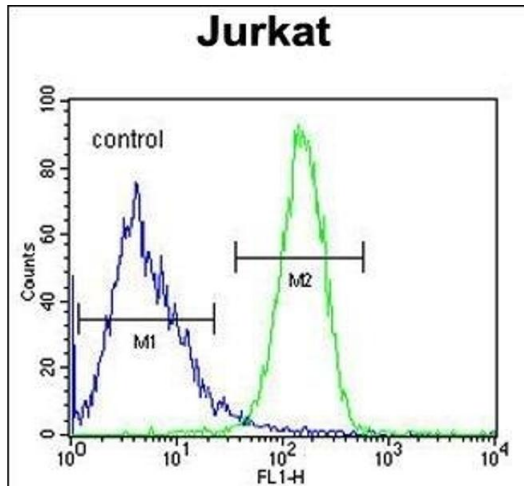
Preservative: Sodium azide

Precaution of Use: This product contains Sodium azide: a POISONOUS AND HAZARDOUS SUBSTANCE which should be handled by trained staff only.

Storage: 4 °C, -20 °C

Storage Comment: Maintain refrigerated at 2-8 °C for up to 6 months. For long term storage store at -20 °C in small aliquots to prevent freeze-thaw cycles.

Expiry Date: 6 months



Flow Cytometry

Image 1. C Antibody (Center) (ABIN651778 and ABIN2840396) flow cytometric analysis of Jurkat cells (right histogram) compared to a negative control cell (left histogram). FITC-conjugated goat-anti-rabbit secondary antibodies were used for the analysis.

Western Blotting

Image 2. C Antibody (Center) (ABIN651778 and ABIN2840396) western blot analysis in mouse cerebellum tissue lysates (15 µg/lane). This demonstrates the C antibody detected C protein (arrow).

Immunohistochemistry (Paraffin-embedded Sections)

Image 3. C Antibody (Center) (ABIN651778 and ABIN2840396) immunohistochemistry analysis in formalin fixed and paraffin embedded human spleen tissue followed by peroxidase conjugation of the secondary antibody and DAB staining. This data demonstrates the use of the C Antibody (Center) for immunohistochemistry. Clinical relevance has not been evaluated.