

Datasheet for ABIN651797
anti-RBM24 antibody (N-Term)



[Go to Product page](#)

3 Images

Overview

Quantity:	400 µL
Target:	RBM24
Binding Specificity:	AA 4-32, N-Term
Reactivity:	Human, Mouse
Host:	Rabbit
Clonality:	Polyclonal
Conjugate:	This RBM24 antibody is un-conjugated
Application:	Western Blotting (WB), Flow Cytometry (FACS), Immunohistochemistry (Paraffin-embedded Sections) (IHC (p))

Product Details

Immunogen:	This RBM24 antibody is generated from rabbits immunized with a KLH conjugated synthetic peptide between 4-32 amino acids from the N-terminal region of human RBM24.
Clone:	RB27099
Isotype:	Ig Fraction
Predicted Reactivity:	X
Purification:	This antibody is purified through a protein A column, followed by peptide affinity purification.

Target Details

Target:	RBM24
---------	-------

Target Details

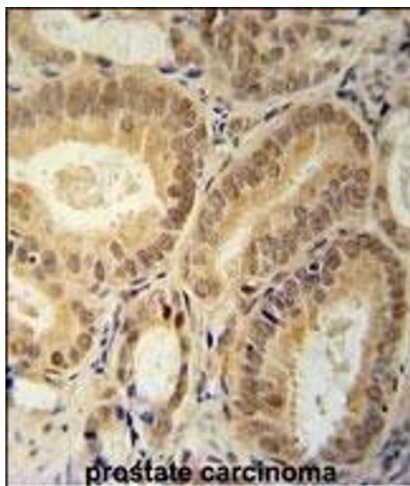
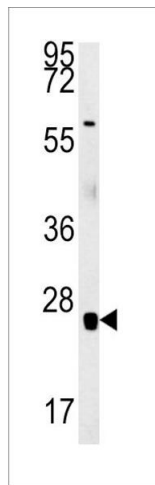
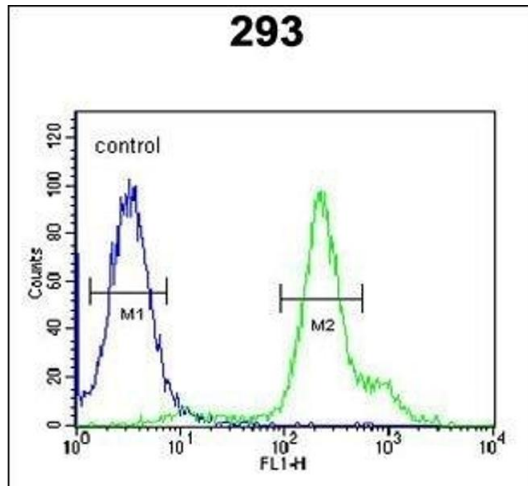
Alternative Name:	RBM24 (RBM24 Products)
Background:	RBM24 is preferentially expressed in muscle during differentiation in vitro and may regulate myogenic differentiation.
Molecular Weight:	24776
Gene ID:	221662
NCBI Accession:	NP_001137413 , NP_001137414 , NP_694565
UniProt:	Q9BX46
Pathways:	Regulation of Muscle Cell Differentiation , Skeletal Muscle Fiber Development

Application Details

Application Notes:	WB: 1:1000. IHC-P: 1:50~100. FC: 1:10~50
Restrictions:	For Research Use only

Handling

Format:	Liquid
Buffer:	Purified polyclonal antibody supplied in PBS with 0.09 % (W/V) sodium azide.
Preservative:	Sodium azide
Precaution of Use:	This product contains Sodium azide: a POISONOUS AND HAZARDOUS SUBSTANCE which should be handled by trained staff only.
Storage:	4 °C,-20 °C
Storage Comment:	Maintain refrigerated at 2-8 °C for up to 6 months. For long term storage store at -20 °C in small aliquots to prevent freeze-thaw cycles.
Expiry Date:	6 months



Flow Cytometry

Image 1. RBM24 Antibody (N-term) (ABIN651797 and ABIN2840402) flow cytometric analysis of 293 cells (right histogram) compared to a negative control cell (left histogram). FITC-conjugated goat-anti-rabbit secondary antibodies were used for the analysis.

Western Blotting

Image 2. RBM24 Antibody (N-term) (ABIN651797 and ABIN2840402) western blot analysis in mouse heart tissue lysates (15 µg/lane). This demonstrates the RBM24 antibody detected RBM24 protein (arrow).

Immunohistochemistry (Paraffin-embedded Sections)

Image 3. RBM24 Antibody (N-term) (ABIN651797 and ABIN2840402) immunohistochemistry analysis in formalin fixed and paraffin embedded human prostate carcinoma followed by peroxidase conjugation of the secondary antibody and DAB staining. This data demonstrates the use of the RBM24 Antibody (N-term) for immunohistochemistry. Clinical relevance has not been evaluated.