

Datasheet for ABIN651802
anti-DIS3L antibody (N-Term)[Go to Product page](#)

2 Images

Overview

Quantity:	400 µL
Target:	DIS3L
Binding Specificity:	AA 195-224, N-Term
Reactivity:	Human, Mouse
Host:	Rabbit
Clonality:	Polyclonal
Conjugate:	This DIS3L antibody is un-conjugated
Application:	Western Blotting (WB), Immunohistochemistry (Paraffin-embedded Sections) (IHC (p))

Product Details

Immunogen:	This DI3L1 antibody is generated from rabbits immunized with a KLH conjugated synthetic peptide between 195-224 amino acids from the N-terminal region of human DI3L1.
Clone:	RB27115
Isotype:	Ig Fraction
Predicted Reactivity:	B
Purification:	This antibody is purified through a protein A column, followed by peptide affinity purification.

Target Details

Target:	DIS3L
Alternative Name:	DI3L1 (DIS3L Products)

Target Details

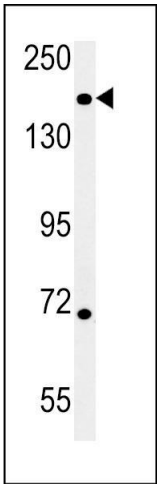
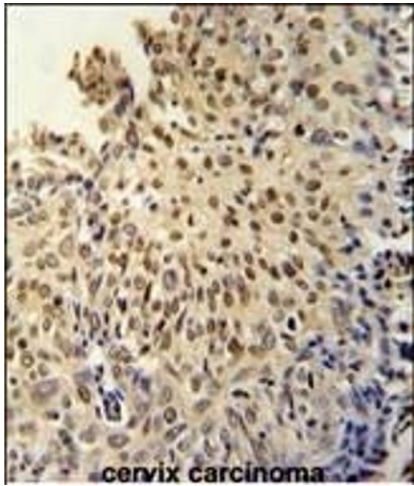
Background:	DIS3L is a probable exonuclease. It has four isoforms.
Molecular Weight:	120787
Gene ID:	115752
NCBI Accession:	NP_001137160 , NP_588616
UniProt:	Q8TF46

Application Details

Application Notes:	WB: 1:1000. IHC-P: 1:50~100
Restrictions:	For Research Use only

Handling

Format:	Liquid
Buffer:	Purified polyclonal antibody supplied in PBS with 0.09 % (W/V) sodium azide.
Preservative:	Sodium azide
Precaution of Use:	This product contains Sodium azide: a POISONOUS AND HAZARDOUS SUBSTANCE which should be handled by trained staff only.
Storage:	4 °C,-20 °C
Storage Comment:	Maintain refrigerated at 2-8 °C for up to 6 months. For long term storage store at -20 °C in small aliquots to prevent freeze-thaw cycles.
Expiry Date:	6 months



Immunohistochemistry (Paraffin-embedded Sections)

Image 1. DI3L1 Antibody (N-term) (ABIN651802 and ABIN2840405) immunohistochemistry analysis in formalin fixed and paraffin embedded human cervix carcinoma followed by peroxidase conjugation of the secondary antibody and DAB staining. This data demonstrates the use of the DI3L1 Antibody (N-term) for immunohistochemistry. Clinical relevance has not been evaluated.

Western Blotting

Image 2. DI3L1 Antibody (N-term) (ABIN651802 and ABIN2840405) western blot analysis in mouse heart tissue lysates (15 µg/lane). This demonstrates the DI3L1 antibody detected DI3L1 protein (arrow).