



[Go to Product page](#)

Datasheet for ABIN651805  
**anti-SEC31B antibody (C-Term)**

2 Images

Overview

Quantity:	400 µL
Target:	SEC31B
Binding Specificity:	AA 1076-1104, C-Term
Reactivity:	Human
Host:	Rabbit
Clonality:	Polyclonal
Conjugate:	This SEC31B antibody is un-conjugated
Application:	Western Blotting (WB), Flow Cytometry (FACS)

Product Details

Immunogen:	This SC31B antibody is generated from rabbits immunized with a KLH conjugated synthetic peptide between 1076-1104 amino acids from the C-terminal region of human SC31B.
Clone:	RB27130
Isotype:	Ig Fraction
Purification:	This antibody is purified through a protein A column, followed by peptide affinity purification.

Target Details

Target:	SEC31B
Alternative Name:	SC31B ( <a href="#">SEC31B Products</a> )
Background:	This gene encodes a protein of unknown function. The protein has moderate similarity to rat

## Target Details

---

VAP1 protein which is an endosomal membrane-associated protein, containing a putative Ca<sup>2+</sup>/calmodulin-dependent kinase II phosphorylation site.

Molecular Weight: 128697

Gene ID: 25956

NCBI Accession: [NP\\_056305](#)

UniProt: [Q9NQW1](#)

## Application Details

---

Application Notes: WB: 1:1000. FC: 1:10~50

Restrictions: For Research Use only

## Handling

---

Format: Liquid

Buffer: Purified polyclonal antibody supplied in PBS with 0.09 % (W/V) sodium azide.

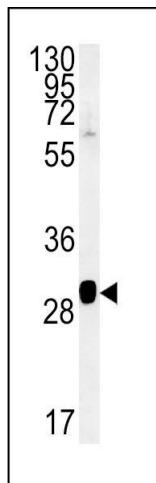
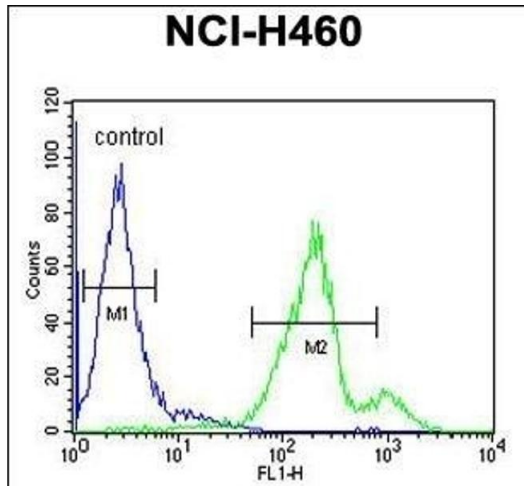
Preservative: Sodium azide

Precaution of Use: This product contains Sodium azide: a POISONOUS AND HAZARDOUS SUBSTANCE which should be handled by trained staff only.

Storage: 4 °C, -20 °C

Storage Comment: Maintain refrigerated at 2-8 °C for up to 6 months. For long term storage store at -20 °C in small aliquots to prevent freeze-thaw cycles.

Expiry Date: 6 months



### Flow Cytometry

**Image 1.** SC31B Antibody (C-term) (ABIN651805 and ABIN2840406) flow cytometric analysis of NCI- cells (right histogram) compared to a negative control cell (left histogram). FITC-conjugated goat-anti-rabbit secondary antibodies were used for the analysis.

### Western Blotting

**Image 2.** SC31B Antibody (C-term) (ABIN651805 and ABIN2840406) western blot analysis in NCI- cell line lysates (15 µg/lane). This demonstrates the SC31B antibody detected the SC31B protein (arrow).