

Datasheet for ABIN651817  
**anti-ALG10B antibody (C-Term)**[Go to Product page](#)

## 1 Image

## Overview

Quantity:	400 µL
Target:	ALG10B
Binding Specificity:	AA 324-353, C-Term
Reactivity:	Human
Host:	Rabbit
Clonality:	Polyclonal
Conjugate:	This ALG10B antibody is un-conjugated
Application:	Western Blotting (WB)

## Product Details

Immunogen:	This ALG10B antibody is generated from rabbits immunized with a KLH conjugated synthetic peptide between 324-353 amino acids from the C-terminal region of human ALG10B.
Clone:	RB27202
Isotype:	Ig Fraction
Purification:	This antibody is purified through a protein A column, followed by peptide affinity purification.

## Target Details

Target:	ALG10B
Alternative Name:	ALG10B ( <a href="#">ALG10B Products</a> )
Background:	Putative alpha-1,2-glucosyltransferase, which adds the third glucose residue to the lipid-linked

## Target Details

oligosaccharide precursor for N-linked glycosylation. Transfers glucose from dolichyl phosphate glucose (Dol-P-Glc) onto the lipid-linked oligosaccharide Glc(2)Man(9)GlcNAc(2)-PP-Dol. When coupled to KCNH2 may reduce KCNH2 sensitivity to classic proarrhythmic drug blockade, possibly by mediating glycosylation of KCNH2.

Molecular Weight: 55448

Gene ID: 144245

NCBI Accession: [NP\\_001013642](#)

UniProt: [Q5I7T1](#)

## Application Details

Application Notes: WB: 1:1000

Restrictions: For Research Use only

## Handling

Format: Liquid

Buffer: Purified polyclonal antibody supplied in PBS with 0.09 % (W/V) sodium azide.

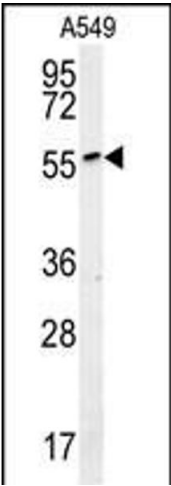
Preservative: Sodium azide

Precaution of Use: This product contains Sodium azide: a POISONOUS AND HAZARDOUS SUBSTANCE which should be handled by trained staff only.

Storage: 4 °C, -20 °C

Storage Comment: Maintain refrigerated at 2-8 °C for up to 6 months. For long term storage store at -20 °C in small aliquots to prevent freeze-thaw cycles.

Expiry Date: 6 months



Western Blotting

**Image 1.** ALG10B Antibody (C-term) (ABIN651817 and ABIN2840410) western blot analysis in A549 cell line lysates (15 µg/lane). This demonstrates the ALG10B antibody detected the ALG10B protein (arrow).