

Datasheet for ABIN651822  
**anti-TRHDE antibody (C-Term)**[Go to Product page](#)

## 2 Images

## Overview

Quantity:	400 µL
Target:	TRHDE
Binding Specificity:	AA 951-980, C-Term
Reactivity:	Human
Host:	Rabbit
Clonality:	Polyclonal
Conjugate:	This TRHDE antibody is un-conjugated
Application:	Western Blotting (WB), Flow Cytometry (FACS)

## Product Details

Immunogen:	This TRHDE antibody is generated from rabbits immunized with a KLH conjugated synthetic peptide between 951-980 amino acids from the C-terminal region of human TRHDE.
Clone:	RB27222
Isotype:	Ig Fraction
Predicted Reactivity:	M, Rat
Purification:	This antibody is purified through a protein A column, followed by peptide affinity purification.

## Target Details

Target:	TRHDE
Alternative Name:	TRHDE ( <a href="#">TRHDE Products</a> )

## Target Details

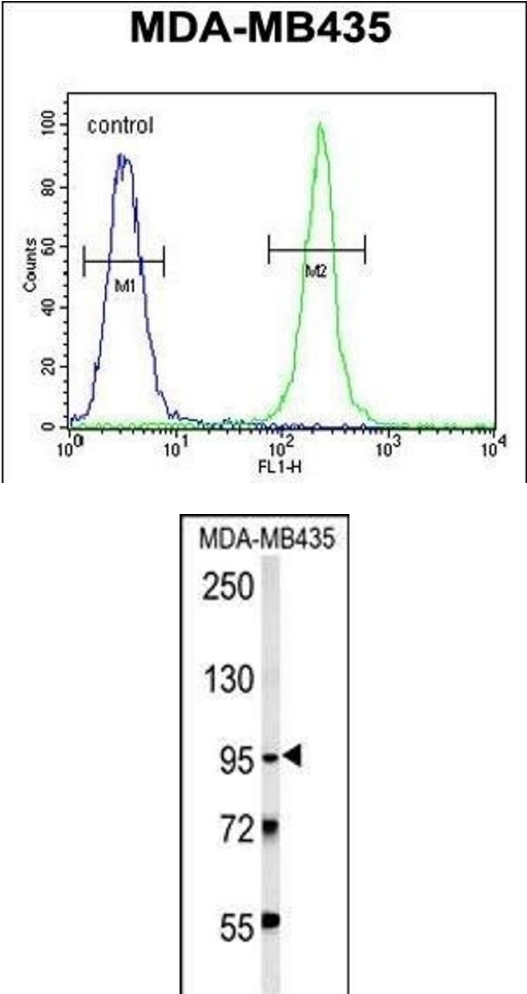
Background:	This gene encodes a member of the peptidase M1 family. TRHDE is an extracellular peptidase that specifically cleaves and inactivates the neuropeptide thyrotropin-releasing hormone.
Molecular Weight:	117000
Gene ID:	29953
NCBI Accession:	<a href="#">NP_037513</a>
UniProt:	<a href="#">Q9UKU6</a>

## Application Details

Application Notes:	WB: 1:1000. FC: 1:10~50
Restrictions:	For Research Use only

## Handling

Format:	Liquid
Buffer:	Purified polyclonal antibody supplied in PBS with 0.09 % (W/V) sodium azide.
Preservative:	Sodium azide
Precaution of Use:	This product contains Sodium azide: a POISONOUS AND HAZARDOUS SUBSTANCE which should be handled by trained staff only.
Storage:	4 °C,-20 °C
Storage Comment:	Maintain refrigerated at 2-8 °C for up to 6 months. For long term storage store at -20 °C in small aliquots to prevent freeze-thaw cycles.
Expiry Date:	6 months



Flow Cytometry

**Image 1.** TRHDE Antibody (C-term) (ABIN651822 and ABIN2840414) flow cytometric analysis of MDA-M cells (right histogram) compared to a negative control cell (left histogram).FITC-conjugated goat-anti-rabbit secondary antibodies were used for the analysis.

Western Blotting

**Image 2.** TRHDE Antibody (C-term) (ABIN651822 and ABIN2840414) western blot analysis in MDA-M cell line lysates (15 µg/lane).This demonstrates the TRHDE antibody detected the TRHDE protein (arrow).