



[Go to Product page](#)

Datasheet for ABIN651863
anti-MCCC1 antibody (AA 397-425)

1 Image

Overview

Quantity:	400 µL
Target:	MCCC1
Binding Specificity:	AA 397-425
Reactivity:	Human, Mouse
Host:	Rabbit
Clonality:	Polyclonal
Conjugate:	This MCCC1 antibody is un-conjugated
Application:	Western Blotting (WB)

Product Details

Immunogen:	This MCCC1 antibody is generated from rabbits immunized with a KLH conjugated synthetic peptide between 397-425 amino acids from the Central region of human MCCC1.
Clone:	RB21829
Isotype:	Ig Fraction
Purification:	This antibody is purified through a protein A column, followed by peptide affinity purification.

Target Details

Target:	MCCC1
Alternative Name:	MCCC1 (MCCC1 Products)
Background:	MCCC1 is the large subunit of 3-methylcrotonyl-CoA carboxylase. This enzyme functions as a

Target Details

heterodimer and catalyzes the carboxylation of 3-methylcrotonyl-CoA to form 3-methylglutaconyl-CoA.

Molecular Weight: 80473

Gene ID: 56922

NCBI Accession: [NP_064551](#)

UniProt: [Q96RQ3](#)

Application Details

Application Notes: WB: 1:1000

Restrictions: For Research Use only

Handling

Format: Liquid

Buffer: Purified polyclonal antibody supplied in PBS with 0.09 % (W/V) sodium azide.

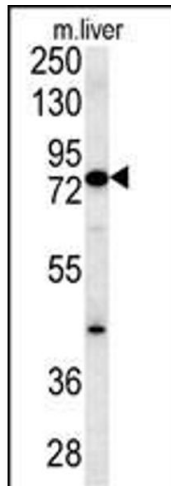
Preservative: Sodium azide

Precaution of Use: This product contains Sodium azide: a POISONOUS AND HAZARDOUS SUBSTANCE which should be handled by trained staff only.

Storage: 4 °C,-20 °C

Storage Comment: Maintain refrigerated at 2-8 °C for up to 6 months. For long term storage store at -20 °C in small aliquots to prevent freeze-thaw cycles.

Expiry Date: 6 months



Western Blotting

Image 1. MCCC1 Antibody (Center) (ABIN651863 and ABIN2840428) western blot analysis in mouse liver tissue lysates (15 μ g/lane). This demonstrates the MCCC1 antibody detected MCCC1 protein (arrow).