

Datasheet for ABIN651864
anti-MARCH5 antibody (N-Term)[Go to Product page](#)

2 Images

Overview

Quantity:	400 µL
Target:	MARCH5
Binding Specificity:	AA 4-32, N-Term
Reactivity:	Human, Mouse
Host:	Rabbit
Clonality:	Polyclonal
Conjugate:	This MARCH5 antibody is un-conjugated
Application:	Western Blotting (WB), Immunohistochemistry (Paraffin-embedded Sections) (IHC (p))

Product Details

Immunogen:	This MARCH5 antibody is generated from rabbits immunized with a KLH conjugated synthetic peptide between 4-32 amino acids from the N-terminal region of human MARCH5.
Clone:	RB21862
Isotype:	IgG
Predicted Reactivity:	B, C, X
Purification:	This antibody is purified through a protein A column, followed by peptide affinity purification.

Target Details

Target:	MARCH5
Alternative Name:	MARCH5 (MARCH5 Products)

Target Details

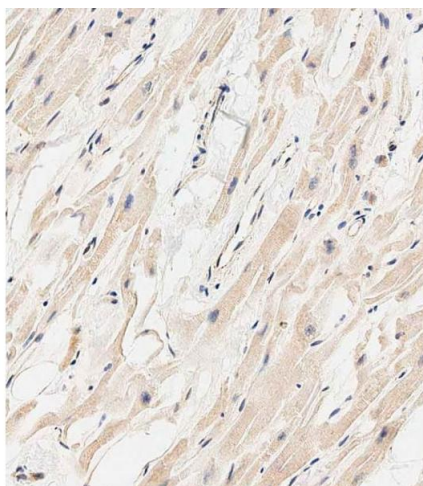
Background:	MARCH5 is a ubiquitin ligase of the mitochondrial outer membrane that plays a role in the control of mitochondrial morphology by regulating mitofusin-2 (MFN2, MIM 608507) and DRP1 (DNM1L, MIM 603850) (Nakamura et al., 2006 [PubMed 16936636]).
Molecular Weight:	31232
Gene ID:	54708
NCBI Accession:	NP_060294
UniProt:	Q9NX47

Application Details

Application Notes:	WB: 1:1000. IHC-P-Leica: 1:500
Restrictions:	For Research Use only

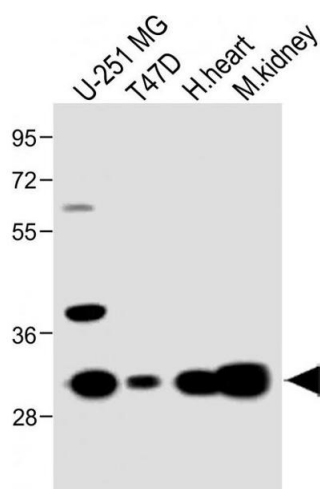
Handling

Format:	Liquid
Buffer:	Purified polyclonal antibody supplied in PBS with 0.09 % (W/V) sodium azide.
Preservative:	Sodium azide
Precaution of Use:	This product contains Sodium azide: a POISONOUS AND HAZARDOUS SUBSTANCE which should be handled by trained staff only.
Storage:	4 °C, -20 °C
Storage Comment:	Maintain refrigerated at 2-8 °C for up to 6 months. For long term storage store at -20 °C in small aliquots to prevent freeze-thaw cycles.
Expiry Date:	6 months



Immunohistochemistry (Paraffin-embedded Sections)

Image 1. Immunohistochemical analysis of paraffin-embedded human heart tissue using A performed on the Leica® BOND RXm. Tissue was fixed with formaldehyde at room temperature, antigen retrieval was by heat mediation with a EDTA buffer (pH 9.0). Samples were incubated with primary Antibody (1:500) for 1 hours at room temperature. A undiluted biotinylated CRF Anti-Polyvalent HRP Polymer antibody was used as the secondary antibody.



Western Blotting

Image 2. All lanes : Anti-RCH5 Antibody (N-term) at 1:1000 dilution Lane 1: U-251 MG whole cell lysate Lane 2: T47D whole cell lysate Lane 3: Hun heart lysate Lane 4: Mouse kidney lysate Lysates/proteins at 20 µg per lane. Secondary Goat Anti-Rabbit IgG, (H+L), Peroxidase conjugated at 1/10000 dilution. Predicted band size : 31 kDa Blocking/Dilution buffer: 5 % NFDM/TBST.