

Datasheet for ABIN651870
anti-SLAMF7 antibody (AA 58-85)[Go to Product page](#)

1 Image

Overview

Quantity:	400 µL
Target:	SLAMF7
Binding Specificity:	AA 58-85
Reactivity:	Human
Host:	Rabbit
Clonality:	Polyclonal
Conjugate:	This SLAMF7 antibody is un-conjugated
Application:	Western Blotting (WB)

Product Details

Immunogen:	This SLAMF7 antibody is generated from rabbits immunized with a KLH conjugated synthetic peptide between 58-85 amino acids from the Central region of human SLAMF7.
Clone:	RB22341
Isotype:	Ig Fraction
Purification:	This antibody is purified through a protein A column, followed by peptide affinity purification.

Target Details

Target:	SLAMF7
Alternative Name:	SLAMF7 (SLAMF7 Products)
Background:	SLAMF7 contains one Ig-like C2-type (immunoglobulin-like) domain. Isoform 1 mediates NK cell

Target Details

activation through a SAP-independent extracellular signal-regulated ERK-mediated pathway. It may play a role in lymphocyte adhesion. Isoform 3 does not mediate any activation. SAP can bind the cytoplasmic tail of isoform 1 when phosphorylated in the presence of Fyn (in vitro). SLAMF7 is expressed in spleen, lymph node, peripheral blood leukocytes, bone marrow, small intestine, stomach, appendix, lung and trachea. Expression was detected in NK cells, activated B-cells, NK-cell line but not in promyelocytic, B-, or T-cell lines. The isoform 3 is expressed at much lower level than isoform 1. There are three named isoforms.

Molecular Weight: 37421

Gene ID: 57823

NCBI Accession: [NP_067004](#)

UniProt: [Q9NQ25](#)

Application Details

Application Notes: WB: 1:1000

Restrictions: For Research Use only

Handling

Format: Liquid

Buffer: Purified polyclonal antibody supplied in PBS with 0.09 % (W/V) sodium azide.

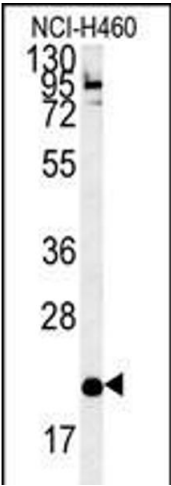
Preservative: Sodium azide

Precaution of Use: This product contains Sodium azide: a POISONOUS AND HAZARDOUS SUBSTANCE which should be handled by trained staff only.

Storage: 4 °C, -20 °C

Storage Comment: Maintain refrigerated at 2-8 °C for up to 6 months. For long term storage store at -20 °C in small aliquots to prevent freeze-thaw cycles.

Expiry Date: 6 months



Western Blotting

Image 1. SLF7 Antibody (Center) (ABIN651870 and ABIN2840431) western blot analysis in NCI- cell line lysates (35 µg/lane). This demonstrates the SLF7 antibody detected the SLF7 protein (arrow).