

Datasheet for ABIN651875

anti-Calcitonin Receptor antibody (AA 465-494)[Go to Product page](#)**3** Images

Overview

Quantity:	400 µL
Target:	Calcitonin Receptor (CALCR)
Binding Specificity:	AA 465-494
Reactivity:	Human
Host:	Rabbit
Clonality:	Polyclonal
Conjugate:	This Calcitonin Receptor antibody is un-conjugated
Application:	Western Blotting (WB), Immunofluorescence (IF), Flow Cytometry (FACS)

Product Details

Immunogen:	This CALCR antibody is generated from rabbits immunized with a KLH conjugated synthetic peptide between 465-494 amino acids of human CALCR.
Clone:	RB22504
Isotype:	IgG
Purification:	This antibody is purified through a protein A column, followed by peptide affinity purification.

Target Details

Target:	Calcitonin Receptor (CALCR)
Alternative Name:	CALCR (CALCR Products)
Background:	CALCR is a high affinity receptor for the peptide hormone calcitonin and belongs to a subfamily

Target Details

of seven transmembrane-spanning G protein-coupled receptors. The encoded protein is involved in maintaining calcium homeostasis and in regulating osteoclast-mediated bone resorption. Polymorphisms in this gene have been associated with variations in bone mineral density and onset of osteoporosis.

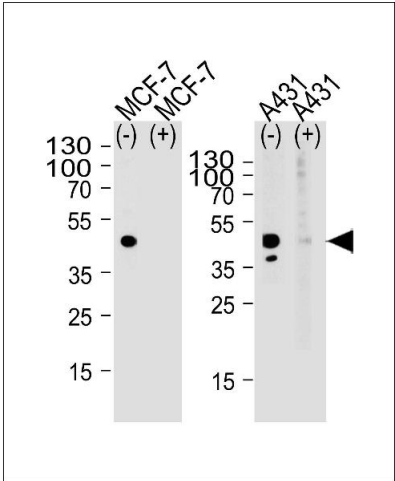
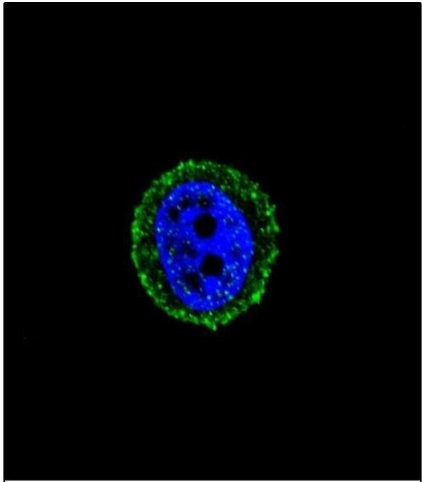
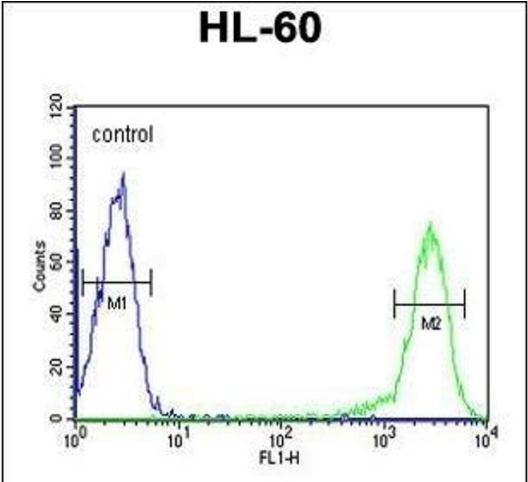
Molecular Weight:	55329
Gene ID:	799
NCBI Accession:	NP_001158209 , NP_001158210 , NP_001733
UniProt:	P30988
Pathways:	cAMP Metabolic Process

Application Details

Application Notes:	IF: 1:10~50. WB: 1:1000. FC: 1:10~50
Restrictions:	For Research Use only

Handling

Format:	Liquid
Buffer:	Purified polyclonal antibody supplied in PBS with 0.09 % (W/V) sodium azide.
Preservative:	Sodium azide
Precaution of Use:	This product contains Sodium azide: a POISONOUS AND HAZARDOUS SUBSTANCE which should be handled by trained staff only.
Storage:	4 °C,-20 °C
Storage Comment:	Maintain refrigerated at 2-8 °C for up to 6 months. For long term storage store at -20 °C in small aliquots to prevent freeze-thaw cycles.
Expiry Date:	6 months



Flow Cytometry

Image 1. CALCR Antibody (C-term) (ABIN651875 and ABIN2840433) flow cytometric analysis of HL-60 cells (right histogram) compared to a negative control cell (left histogram).FITC-conjugated goat-anti-rabbit secondary antibodies were used for the analysis.

Immunofluorescence

Image 2. Confocal immunofluorescent analysis of CALCR Antibody (C-term) (ABIN651875 and ABIN2840433) with MCF-7 cell followed by Alexa Fluor® 488-conjugated goat anti-rabbit IgG (green). DAPI was used to stain the cell nuclear (blue).

Western Blotting

Image 3. Western blot analysis of lysate from MCF-7, A431 cell line, using CALCR Antibody (C-term) (ABIN651875 and ABIN2840433) with(+) or without(-) peptides. (ABIN651875 and ABIN2840433) was diluted at 1:1000 at each lane. A goat anti-rabbit(HRP) at 1:5000 dilution was used as the secondary antibody. Lysate at 35 µg per lane.