

Datasheet for ABIN651876
anti-CFHR5 antibody (AA 203-231)[Go to Product page](#)

4 Images

Overview

| | |
|----------------------|---|
| Quantity: | 400 µL |
| Target: | CFHR5 |
| Binding Specificity: | AA 203-231 |
| Reactivity: | Human |
| Host: | Rabbit |
| Clonality: | Polyclonal |
| Conjugate: | This CFHR5 antibody is un-conjugated |
| Application: | Western Blotting (WB), Flow Cytometry (FACS), Immunohistochemistry (Paraffin-embedded Sections) (IHC (p)) |

Product Details

| | |
|---------------|---|
| Immunogen: | This CFHR5 antibody is generated from rabbits immunized with a KLH conjugated synthetic peptide between 203-231 amino acids from the Central region of human CFHR5. |
| Clone: | RB22505 |
| Isotype: | Ig Fraction |
| Purification: | This antibody is purified through a protein A column, followed by peptide affinity purification. |

Target Details

| | |
|-------------------|--|
| Target: | CFHR5 |
| Alternative Name: | CFHR5 (CFHR5 Products) |

Target Details

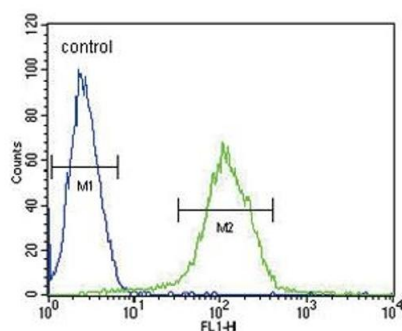
| | |
|-------------------|--|
| Background: | CFHR5 is a member of a small complement factor H (CFH) gene cluster on chromosome 1. Each member of this gene family contains multiple short consensus repeats (SCRs) typical of regulators of complement activation. The protein encoded by this gene has nine SCRs with the first two repeats having heparin binding properties, a region within repeats 5-7 having heparin binding and C reactive protein binding properties, and the C-terminal repeats being similar to a complement component 3 b (C3b) binding domain. This protein co-localizes with C3, binds C3b in a dose-dependent manner, and is recruited to tissues damaged by C-reactive protein. Allelic variations in this gene have been associated, but not causally linked, with two different forms of kidney disease: membranoproliferative glomerulonephritis type II (MPGNII) and hemolytic uraemic syndrome (HUS). [provided by RefSeq]. |
| Molecular Weight: | 64419 |
| Gene ID: | 81494 |
| NCBI Accession: | NP_110414 |
| UniProt: | Q9BXR6 |

Application Details

| | |
|--------------------|---|
| Application Notes: | WB: 1:1000. IHC-P: 1:10~50. IHC-P: 1:100. FC: 1:10~50 |
| Restrictions: | For Research Use only |

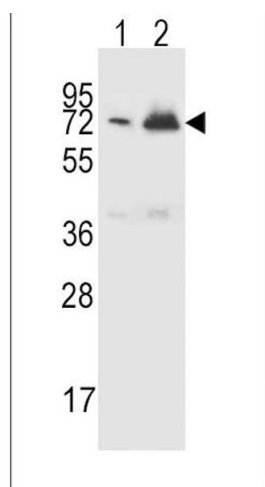
Handling

| | |
|--------------------|--|
| Format: | Liquid |
| Buffer: | Purified polyclonal antibody supplied in PBS with 0.09 % (W/V) sodium azide. |
| Preservative: | Sodium azide |
| Precaution of Use: | This product contains Sodium azide: a POISONOUS AND HAZARDOUS SUBSTANCE which should be handled by trained staff only. |
| Storage: | 4 °C,-20 °C |
| Storage Comment: | Maintain refrigerated at 2-8 °C for up to 6 months. For long term storage store at -20 °C in small aliquots to prevent freeze-thaw cycles. |
| Expiry Date: | 6 months |



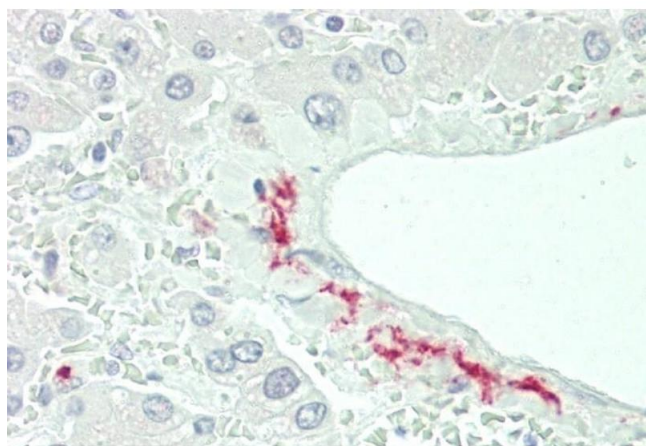
Flow Cytometry

Image 1. CFHR5 Antibody (Center) (ABIN651876 and ABIN2840434) flow cytometric analysis of CEM cells (right histogram) compared to a negative control cell (left histogram). FITC-conjugated goat-anti-rabbit secondary antibodies were used for the analysis.



Western Blotting

Image 2. CFHR5 Antibody (Center) (ABIN651876 and ABIN2840434) western blot analysis in CEM (lane 1), K562 (lane 2) cell line lysates (15 µg/lane). This demonstrates the CFHR5 antibody detected the CFHR5 protein (arrow).



Immunohistochemistry (Paraffin-embedded Sections)

Image 3. Formalin-fixed and paraffin-embedded H. liver tissue reacted with CFHR5 Antibody (Center) (ABIN651876 and ABIN2840434).

Please check the [product details page](#) for more images. Overall 4 images are available for ABIN651876.