

Datasheet for ABIN651888
anti-APOBEC2 antibody (N-Term)[Go to Product page](#)

2 Images

Overview

Quantity:	400 µL
Target:	APOBEC2
Binding Specificity:	AA 19-48, N-Term
Reactivity:	Human, Mouse
Host:	Rabbit
Clonality:	Polyclonal
Conjugate:	This APOBEC2 antibody is un-conjugated
Application:	Western Blotting (WB), Flow Cytometry (FACS), Immunohistochemistry (Paraffin-embedded Sections) (IHC (p))

Product Details

Immunogen:	This APOBEC2 antibody is generated from rabbits immunized with a KLH conjugated synthetic peptide between 19-48 amino acids from the N-terminal region of human APOBEC2.
Clone:	RB25184
Isotype:	Ig Fraction
Predicted Reactivity:	B
Purification:	This antibody is purified through a protein A column, followed by peptide affinity purification.

Target Details

Target:	APOBEC2
---------	---------

Target Details

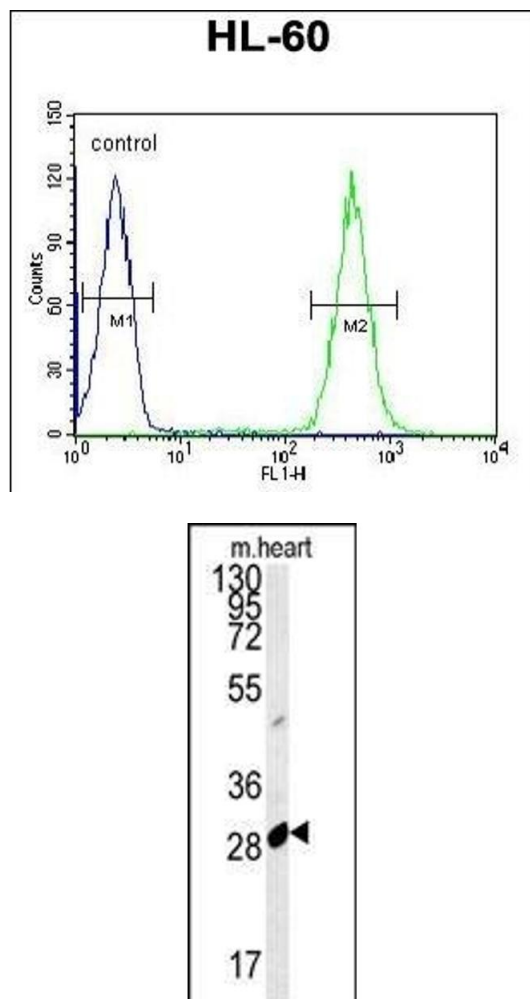
Alternative Name:	APOBEC2 (APOBEC2 Products)
Background:	APOBEC2 belongs to the cytidine and deoxycytidylate deaminase family. It is probable C to U editing enzyme whose physiological substrate is not yet known. It does not display detectable apoB mRNA editing and has a low intrinsic cytidine deaminase activity.
Molecular Weight:	25703
Gene ID:	10930
NCBI Accession:	NP_006780
UniProt:	Q9Y235

Application Details

Application Notes:	WB: 1:1000. IHC-P: 1:50~100. FC: 1:10~50
Restrictions:	For Research Use only

Handling

Format:	Liquid
Buffer:	Purified polyclonal antibody supplied in PBS with 0.09 % (W/V) sodium azide.
Preservative:	Sodium azide
Precaution of Use:	This product contains Sodium azide: a POISONOUS AND HAZARDOUS SUBSTANCE which should be handled by trained staff only.
Storage:	4 °C,-20 °C
Storage Comment:	Maintain refrigerated at 2-8 °C for up to 6 months. For long term storage store at -20 °C in small aliquots to prevent freeze-thaw cycles.
Expiry Date:	6 months



Flow Cytometry

Image 1. OBEC2 Antibody (N-term) 5701a flow cytometric analysis of HL-60 cells (right histogram) compared to a negative control cell (left histogram). FITC-conjugated goat-anti-rabbit secondary antibodies were used for the analysis.

Western Blotting

Image 2. OBEC2 Antibody (N-term) 5701a western blot analysis in mouse heart tissue lysates (15 μ g/lane). This demonstrates the OBEC2 antibody detected OBEC2 protein (arrow).