



Datasheet for ABIN651901
anti-LMAN1L antibody (AA 279-308)



[Go to Product page](#)

2 Images

Overview

Quantity:	400 µL
Target:	LMAN1L
Binding Specificity:	AA 279-308
Reactivity:	Human
Host:	Rabbit
Clonality:	Polyclonal
Conjugate:	This LMAN1L antibody is un-conjugated
Application:	Western Blotting (WB), Flow Cytometry (FACS)

Product Details

Immunogen:	This LMA1L antibody is generated from rabbits immunized with a KLH conjugated synthetic peptide between 279-308 amino acids from the Central region of human LMA1L.
Clone:	RB26944
Isotype:	Ig Fraction
Purification:	This antibody is purified through a protein A column, followed by peptide affinity purification.

Target Details

Target:	LMAN1L
Alternative Name:	LMA1L (LMAN1L Products)
Gene ID:	79748

Target Details

NCBI Accession: [NP_068591](#)

UniProt: [Q9HAT1](#)

Application Details

Application Notes: WB: 1:1000. FC: 1:10~50

Restrictions: For Research Use only

Handling

Format: Liquid

Buffer: Purified polyclonal antibody supplied in PBS with 0.09 % (W/V) sodium azide.

Preservative: Sodium azide

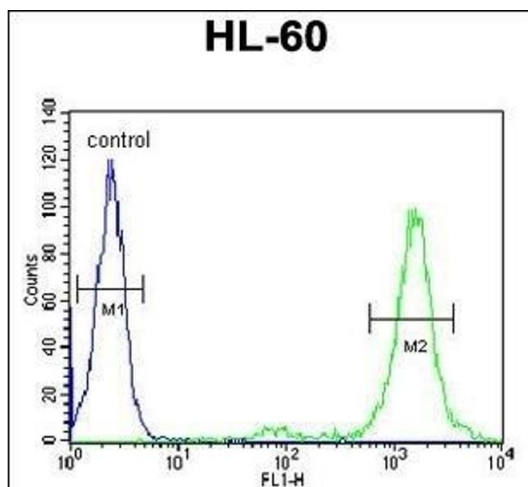
Precaution of Use: This product contains Sodium azide: a POISONOUS AND HAZARDOUS SUBSTANCE which should be handled by trained staff only.

Storage: 4 °C, -20 °C

Storage Comment: Maintain refrigerated at 2-8 °C for up to 6 months. For long term storage store at -20 °C in small aliquots to prevent freeze-thaw cycles.

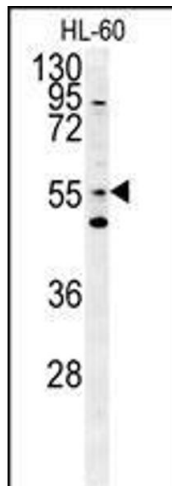
Expiry Date: 6 months

Images



Flow Cytometry

Image 1. LL Antibody (Center) (ABIN651901 and ABIN2840445) flow cytometric analysis of HL-60 cells (right histogram) compared to a negative control cell (left histogram). FITC-conjugated goat-anti-rabbit secondary antibodies were used for the analysis.



Western Blotting

Image 2. LL Antibody (Center) (ABIN651901 and ABIN2840445) western blot analysis in HL-60 cell line lysates (15 µg/lane). This demonstrates the LL antibody detected the LL protein (arrow).