



[Go to Product page](#)

Datasheet for ABIN651917

anti-CCNYL1 antibody (N-Term)

3 Images

Overview

Quantity:	400 µL
Target:	CCNYL1
Binding Specificity:	AA 41-70, N-Term
Reactivity:	Human, Hamster
Host:	Rabbit
Clonality:	Polyclonal
Conjugate:	This CCNYL1 antibody is un-conjugated
Application:	Western Blotting (WB), Immunohistochemistry (Paraffin-embedded Sections) (IHC (p))

Product Details

Immunogen:	This CCYL1 antibody is generated from rabbits immunized with a KLH conjugated synthetic peptide between 41-70 amino acids from the N-terminal region of human CCYL1.
Clone:	RB27113
Isotype:	Ig Fraction
Purification:	This antibody is purified through a protein A column, followed by peptide affinity purification.

Target Details

Target:	CCNYL1
Alternative Name:	CCYL1 (CCNYL1 Products)
Background:	CCNYL1 belongs to the cyclin family, Cyclin Y subfamily and contains 1 cyclin N terminal

Target Details

domain. The specific function of CCNYL1 is not yet known.

Molecular Weight: 40705

Gene ID: 151195

NCBI Accession: [NP_001135772](#), [NP_689736](#)

UniProt: [Q8N7R7](#)

Application Details

Application Notes: WB: 1:1000. WB: 1:1000. IHC-P: 1:50~100

Restrictions: For Research Use only

Handling

Format: Liquid

Buffer: Purified polyclonal antibody supplied in PBS with 0.09 % (W/V) sodium azide.

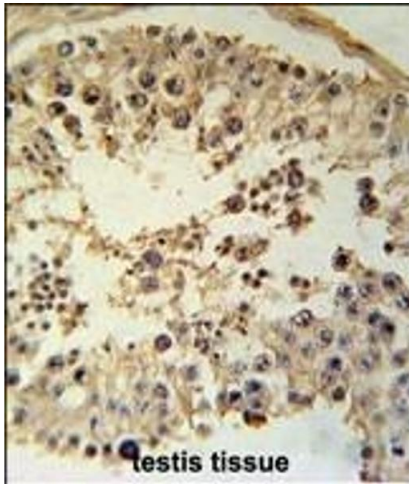
Preservative: Sodium azide

Precaution of Use: This product contains Sodium azide: a POISONOUS AND HAZARDOUS SUBSTANCE which should be handled by trained staff only.

Storage: 4 °C,-20 °C

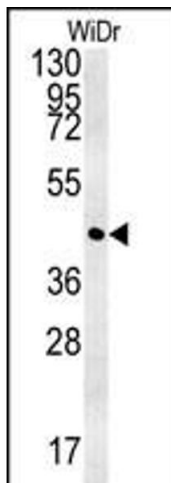
Storage Comment: Maintain refrigerated at 2-8 °C for up to 6 months. For long term storage store at -20 °C in small aliquots to prevent freeze-thaw cycles.

Expiry Date: 6 months



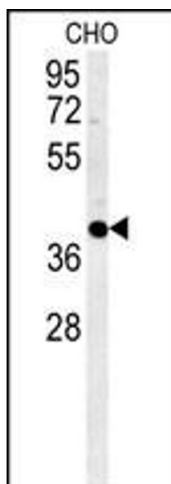
Immunohistochemistry (Paraffin-embedded Sections)

Image 1. CCYL1 Antibody (N-term) (ABIN651917 and ABIN2840452) immunohistochemistry analysis in formalin fixed and paraffin embedded human testis tissue followed by peroxidase conjugation of the secondary antibody and DAB staining. This data demonstrates the use of the CCYL1 Antibody (N-term) for immunohistochemistry. Clinical relevance has not been evaluated.



Western Blotting

Image 2. CCYL1 Antibody (N-term) (ABIN651917 and ABIN2840452) western blot analysis in WiDr cell line lysates (35 µg/lane). This demonstrates the CCYL1 antibody detected the CCYL1 protein (arrow).



Western Blotting

Image 3. CCYL1 Antibody (N-term) (ABIN651917 and ABIN2840452) western blot analysis in CHO cell line lysates (35 µg/lane). This demonstrates the CCYL1 antibody detected the CCYL1 protein (arrow).