



[Go to Product page](#)

Datasheet for ABIN651918  
**anti-Pgap2 antibody (C-Term)**

2 Images

Overview

Quantity:	400 µL
Target:	Pgap2
Binding Specificity:	AA 214-242, C-Term
Reactivity:	Human
Host:	Rabbit
Clonality:	Polyclonal
Conjugate:	This Pgap2 antibody is un-conjugated
Application:	Western Blotting (WB), Flow Cytometry (FACS)

Product Details

Immunogen:	This PGAP2 antibody is generated from rabbits immunized with a KLH conjugated synthetic peptide between 214-242 amino acids from the C-terminal region of human PGAP2.
Clone:	RB27126
Isotype:	Ig Fraction
Predicted Reactivity:	Ha, M, Rat
Purification:	This antibody is purified through a protein A column, followed by peptide affinity purification.

Target Details

Target:	Pgap2
Alternative Name:	PGAP2 ( <a href="#">Pgap2 Products</a> )

## Target Details

---

Background:	PGAP2 is involved in the lipid remodeling steps of GPI-anchor maturation. Required for stable expression of GPI-anchored proteins at the cell surface (By similarity).
Molecular Weight:	29400
Gene ID:	27315
NCBI Accession:	<a href="#">NP_001138910</a> , <a href="#">NP_001243164</a> , <a href="#">NP_001243165</a> , <a href="#">NP_001243166</a> , <a href="#">NP_001243167</a> , <a href="#">NP_001243168</a> , <a href="#">NP_001243169</a> , <a href="#">NP_055304</a>
UniProt:	<a href="#">Q9UHH9</a>

## Application Details

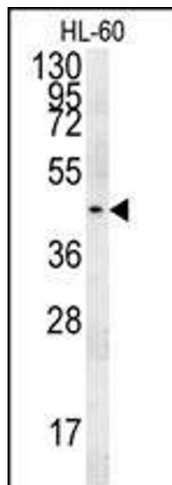
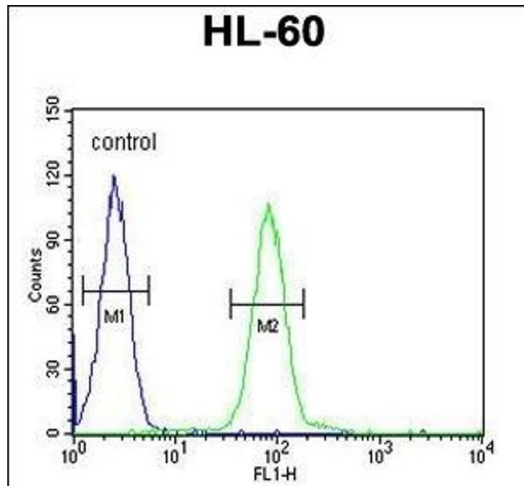
---

Application Notes:	WB: 1:1000. FC: 1:10~50
Restrictions:	For Research Use only

## Handling

---

Format:	Liquid
Buffer:	Purified polyclonal antibody supplied in PBS with 0.09 % (W/V) sodium azide.
Preservative:	Sodium azide
Precaution of Use:	This product contains Sodium azide: a POISONOUS AND HAZARDOUS SUBSTANCE which should be handled by trained staff only.
Storage:	4 °C, -20 °C
Storage Comment:	Maintain refrigerated at 2-8 °C for up to 6 months. For long term storage store at -20 °C in small aliquots to prevent freeze-thaw cycles.
Expiry Date:	6 months



### Flow Cytometry

**Image 1.** PG Antibody (C-term) (ABIN651918 and ABIN2840453) flow cytometric analysis of HL-60 cells (right histogram) compared to a negative control cell (left histogram). FITC-conjugated goat-anti-rabbit secondary antibodies were used for the analysis.

### Western Blotting

**Image 2.** PG Antibody (C-term) (ABIN651918 and ABIN2840453) western blot analysis in HL-60 cell line lysates (15 µg/lane). This demonstrates the PG antibody detected the PG protein (arrow).